

## VPS36 Antibody

Catalog No: #40296

Orders: [order@signalwayantibody.com](mailto:order@signalwayantibody.com)Support: [tech@signalwayantibody.com](mailto:tech@signalwayantibody.com)

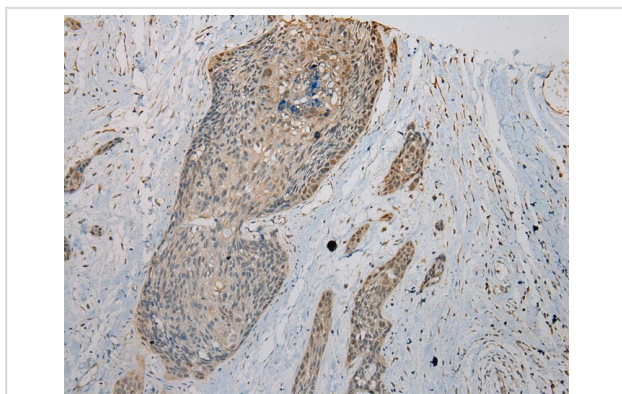
## Description

Product Name	VPS36 Antibody
Host Species	Rabbit
Clonality	Polyclonal
Purification	Antigen affinity purification.
Applications	IHC
Species Reactivity	Hu
Specificity	The antibody detects endogenous levels of total VPS36 protein.
Immunogen Type	Peptide
Immunogen Description	Synthetic peptide of human vacuolar protein sorting 36 homolog ( <i>S. cerevisiae</i> )
Target Name	VPS36
Other Names	EAP45; C13orf9; CGI-145
Accession No.	Swiss-Prot:Q86VN1 Gene Accssion:NP_057159
Uniprot	Q86VN1
GeneID	51028;
Concentration	2.7mg/ml
Formulation	Rabbit IgG in pH7.4 PBS, 0.05% NaN <sub>3</sub> , 40% Glycerol.
Storage	Store at -20°C

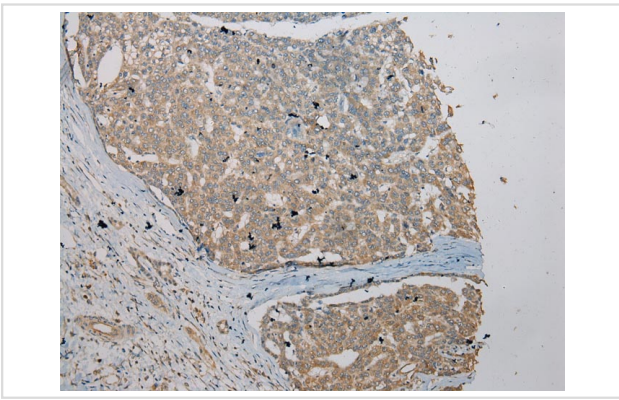
## Application Details

Immunohistochemistry: 1:100-1:200

## Images



Immunohistochemical analysis of paraffin-embedded Human Esophagus cancer tissue using #40296at dilution 1/200.



Immunohistochemical analysis of paraffin-embedded Human Liver cancer tissue using #40296 at dilution 1/200.

## Background

This gene encodes a protein that is a subunit of the endosomal sorting complex required for transport II (ESCRT-II). This protein complex functions in sorting of ubiquitinated membrane proteins during endocytosis. A similar protein complex in rat is associated with RNA polymerase elongation factor II.?

Note: This product is for in vitro research use only