

DDA1 Antibody

Catalog No: #47032

Orders: order@signalwayantibody.comSupport: tech@signalwayantibody.com

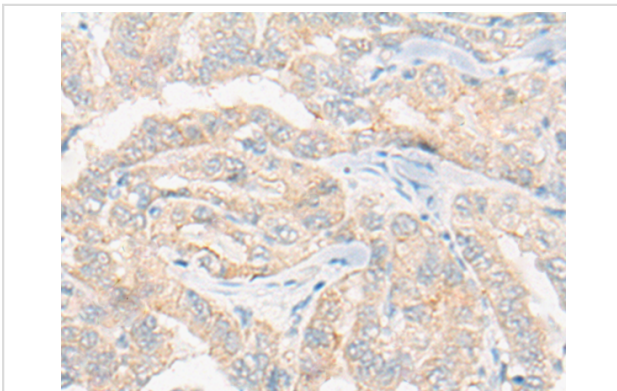
Description

Product Name	DDA1 Antibody
Host Species	Rabbit
Clonality	Polyclonal
Purification	Antigen affinity purification
Applications	IHC
Species Reactivity	Hu
Specificity	The antibody detects endogenous levels of total DDA1 protein.
Immunogen Type	protein
Immunogen Description	Full length fusion protein
Target Name	DDA1
Other Names	PCIA1; C19orf58
Accession No.	Swiss-Prot#:Q9BW61NCBI Gene ID:79016Gene Accssion:BC000615
Uniprot	Q9BW61
GeneID	79016;
Concentration	1.2mg/ml
Formulation	Rabbit IgG in pH7.4 PBS, 0.05% NaN ₃ , 40% Glycerol.
Storage	Store at -20C

Application Details

Immunofluorescence:1: 20-100

Images



The image is immunohistochemistry of paraffin-embedded Human thyroid cancer tissue using 47032(DDA1 Antibody) at dilution 1/20. (Original magnification: ?00)

Background

May be involved in ubiquitination and subsequent proteasomal degradation of target proteins. Component of the DDD-E2 complexes which may provide a platform for interaction with CUL4A and WD repeat proteins.

Note: This product is for in vitro research use only