

## DDOST Antibody

Catalog No: #47035

Orders: [order@signalwayantibody.com](mailto:order@signalwayantibody.com)Support: [tech@signalwayantibody.com](mailto:tech@signalwayantibody.com)

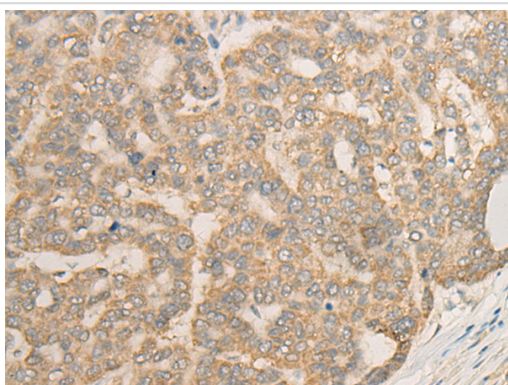
## Description

Product Name	DDOST Antibody
Host Species	Rabbit
Clonality	Polyclonal
Purification	Antigen affinity purification
Applications	WB, IHC
Species Reactivity	Hu
Specificity	The antibody detects endogenous levels of total DDOST protein.
Immunogen Type	protein
Immunogen Description	Fusion protein of human DDOST
Target Name	DDOST
Other Names	OST; WBP1; AGER1; CDG1R; OST48; OKSWcl45
Accession No.	Swiss-Prot#:P39656NCBI Gene ID:1650Gene Accssion:BC002594
Uniprot	P39656
GeneID	1650;
Calculated MW	51 kDa
Concentration	0.5mg/ml
Formulation	Rabbit IgG in pH7.4 PBS, 0.05% NaN <sub>3</sub> , 40% Glycerol.
Storage	Store at -20C

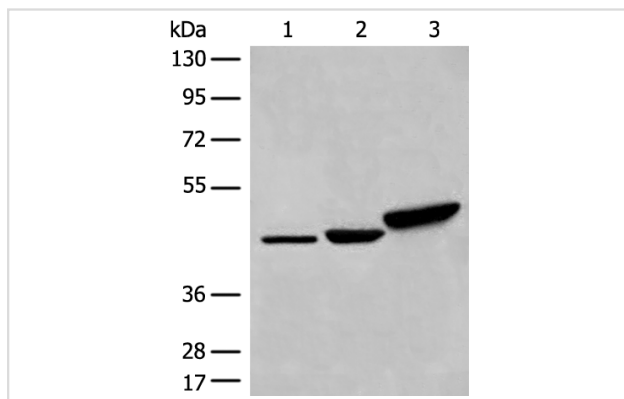
## Application Details

Western blotting:1:200-1000Immunofluorescence:1: 25-100

## Images



The image is immunohistochemistry of paraffin-embedded Human liver cancer tissue using 47035(DDOST Antibody) at dilution 1/20. (Original magnification: ?00)



Gel: 8%SDS-PAGE

Lysate: 40 µg, Lane 1-3: A172, HepG2 and LOVO cell lysates

Primary antibody: DDOST Antibody at dilution 1/200

Secondary antibody: Goat anti rabbit IgG at 1/8000 dilution

Exposure time: 5 seconds

## Background

This gene encodes a component of the oligosaccharyltransferase complex which catalyzes the transfer of high-mannose oligosaccharides to asparagine residues on nascent polypeptides in the lumen of the rough endoplasmic reticulum. The protein complex co-purifies with ribosomes. The product of this gene is also implicated in the processing of advanced glycation endproducts (AGEs), which form from non-enzymatic reactions between sugars and proteins or lipids and are associated with aging and hyperglycemia.

Note: This product is for in vitro research use only