

DDX21 Antibody

Catalog No: #47037

Orders: order@signalwayantibody.comSupport: tech@signalwayantibody.com

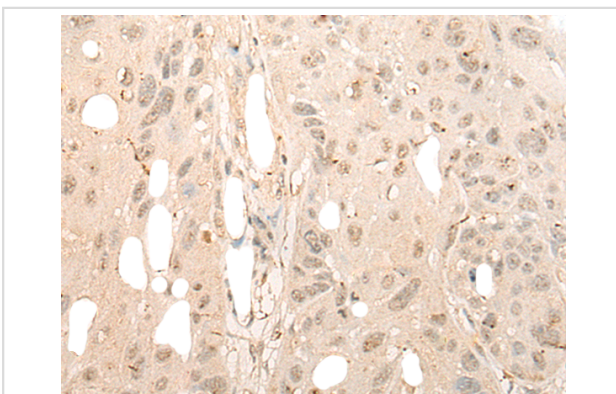
Description

Product Name	DDX21 Antibody
Host Species	Rabbit
Clonality	Polyclonal
Purification	Antigen affinity purification
Applications	IHC
Species Reactivity	Hu
Specificity	The antibody detects endogenous levels of total DDX21 protein.
Immunogen Type	protein
Immunogen Description	Fusion protein of human DDX21
Target Name	DDX21
Other Names	GUA; GURDB; RH-II/GU; RH-II/GuA
Accession No.	Swiss-Prot#:Q9NR30NCBI Gene ID:9188Gene Accssion:BC008071
Uniprot	Q9NR30
GeneID	9188;
Concentration	0.9mg/ml
Formulation	Rabbit IgG in pH7.4 PBS, 0.05% NaN ₃ , 40% Glycerol.
Storage	Store at -20C

Application Details

Immunofluorescence:1: 20-100

Images



The image is immunohistochemistry of paraffin-embedded Human esophagus cancer tissue using 47037(DDX21 Antibody) at dilution 1/40. (Original magnification: ?00)

Background

DEAD box proteins, characterized by the conserved motif Asp-Glu-Ala-Asp (DEAD), are putative RNA helicases. They are implicated in a number of cellular processes involving alteration of RNA secondary structure such as translation initiation, nuclear and mitochondrial splicing, and ribosome and spliceosome assembly. Based on their distribution patterns, some members of this family are believed to be involved in embryogenesis, spermatogenesis, and cellular growth and division. This gene encodes a DEAD box protein, which is an antigen recognized by autoimmune antibodies

from a patient with watermelon stomach disease. This protein unwinds double-stranded RNA, folds single-stranded RNA, and may play important roles in ribosomal RNA biogenesis, RNA editing, RNA transport, and general transcription.?

Note: This product is for in vitro research use only