

## DDX27 Antibody

Catalog No: #47039

Orders: [order@signalwayantibody.com](mailto:order@signalwayantibody.com)Support: [tech@signalwayantibody.com](mailto:tech@signalwayantibody.com)

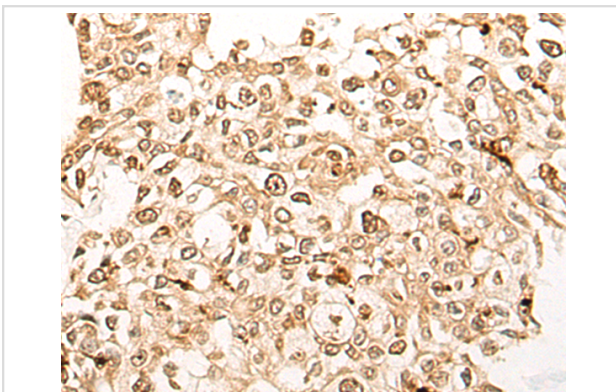
## Description

Product Name	DDX27 Antibody
Host Species	Rabbit
Clonality	Polyclonal
Purification	Antigen affinity purification
Applications	WB, IHC
Species Reactivity	Hu
Specificity	The antibody detects endogenous levels of total DDX27 protein.
Immunogen Type	protein
Immunogen Description	Fusion protein of human DDX27
Target Name	DDX27
Other Names	DRS1; RHLP; Drs1p; PP3241; HSPC259; dJ686N3.1
Accession No.	Swiss-Prot#:Q96GQ7NCBI Gene ID:55661Gene Accssion:BC011927
Uniprot	Q96GQ7
GeneID	55661;
Calculated MW	90 kDa
Concentration	0.5mg/ml
Formulation	Rabbit IgG in pH7.4 PBS, 0.05% NaN <sub>3</sub> , 40% Glycerol.
Storage	Store at -20C

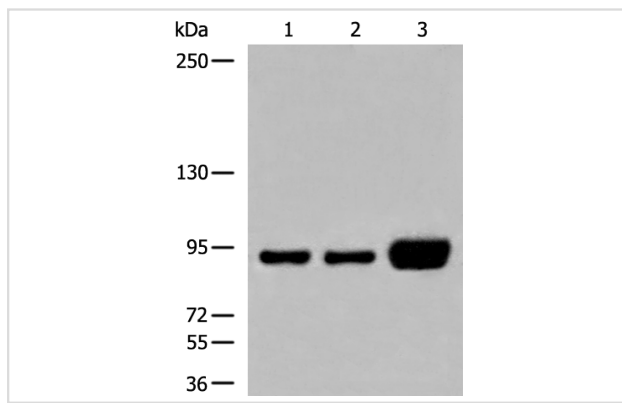
## Application Details

Western blotting:1:200-1000Immunofluorescence:1: 20-100

## Images



The image is immunohistochemistry of paraffin-embedded Human prostate cancer tissue using 47039(DDX27 Antibody) at dilution 1/20. (Original magnification: ?00)



Gel: 6%SDS-PAGE

Lysate: 40 µg, Lane 1-3: HEPG2, HeLa and K562 cell lysates

Primary antibody: DDX27 Antibody at dilution 1/250

Secondary antibody: Goat anti rabbit IgG at 1/8000 dilution

Exposure time: 2 seconds

## Background

DEAD box proteins, characterized by the conserved motif Asp-Glu-Ala-Asp (DEAD), are putative RNA helicases. They are implicated in a number of cellular processes involving alteration of RNA secondary structure such as translation initiation, nuclear and mitochondrial splicing, and ribosome and spliceosome assembly. Based on their distribution patterns, some members of this family are believed to be involved in embryogenesis, spermatogenesis, and cellular growth and division. This gene encodes a DEAD box protein, the function of which has not been determined.

Note: This product is for in vitro research use only