

DDX42 Antibody

Catalog No: #47040

Orders: order@signalwayantibody.comSupport: tech@signalwayantibody.com

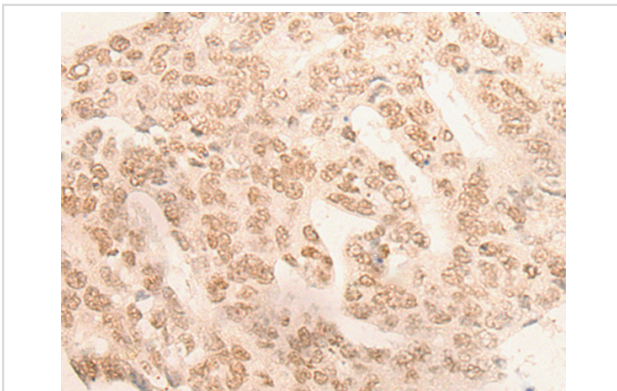
Description

Product Name	DDX42 Antibody
Host Species	Rabbit
Clonality	Polyclonal
Purification	Antigen affinity purification
Applications	IHC
Species Reactivity	Hu
Specificity	The antibody detects endogenous levels of total DDX42 protein.
Immunogen Type	protein
Immunogen Description	Fusion protein of human DDX42
Target Name	DDX42
Other Names	RHELP; RNAHP; SF3B8; DDX42P; SF3b125
Accession No.	Swiss-Prot#:Q86XP3NCBI Gene ID:11325Gene Accssion:BC015505
Uniprot	Q86XP3
GeneID	11325;
Concentration	0.6mg/ml
Formulation	Rabbit IgG in pH7.4 PBS, 0.05% NaN ₃ , 40% Glycerol.
Storage	Store at -20C

Application Details

Immunofluorescence:1: 20-100

Images



The image is immunohistochemistry of paraffin-embedded Human colorectal cancer tissue using 47040(DDX42 Antibody) at dilution 1/20. (Original magnification: ?00)

Background

This gene encodes a member of the Asp-Glu-Ala-Asp (DEAD) box protein family. Members of this protein family are putative RNA helicases, and are implicated in a number of cellular processes involving alteration of RNA secondary structure such as translation initiation, nuclear and mitochondrial splicing, and ribosome and spliceosome assembly. Members of this family are believed to be involved in embryogenesis, spermatogenesis, and cellular growth and division. Two transcript variants encoding the same protein have been identified for this gene.

Note: This product is for in vitro research use only