

DGCR6 Antibody

Catalog No: #47049

Orders: order@signalwayantibody.comSupport: tech@signalwayantibody.com

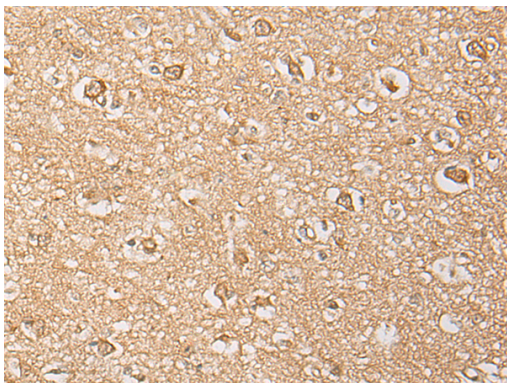
Description

| | |
|-----------------------|---|
| Product Name | DGCR6 Antibody |
| Host Species | Rabbit |
| Clonality | Polyclonal |
| Purification | Antigen affinity purification |
| Applications | WB, IHC |
| Species Reactivity | Hu |
| Specificity | The antibody detects endogenous levels of total DGCR6 protein. |
| Immunogen Type | peptide |
| Immunogen Description | Synthetic peptide of human DGCR6 |
| Target Name | DGCR6 |
| Accession No. | Swiss-Prot#:Q14129 NCBI Gene ID:8214Gene Accssion:NP_005666 |
| Uniprot | Q14129 |
| GeneID | 8214; |
| Calculated MW | 25 kDa |
| Concentration | 0.7mg/ml |
| Formulation | Rabbit IgG in pH7.4 PBS, 0.05% NaN ₃ , 40% Glycerol. |
| Storage | Store at -20C |

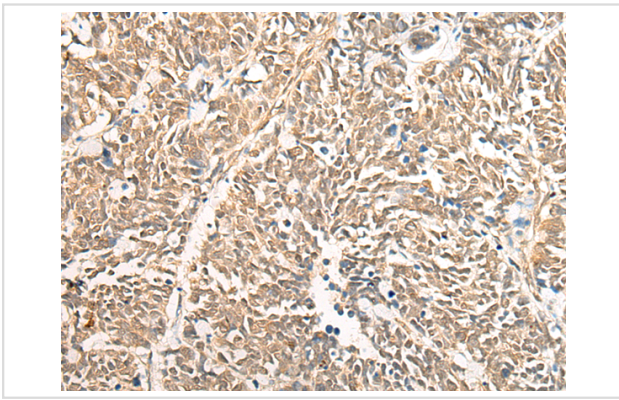
Application Details

Western blotting:1:200-1000Immunofluorescence:1: 25-100

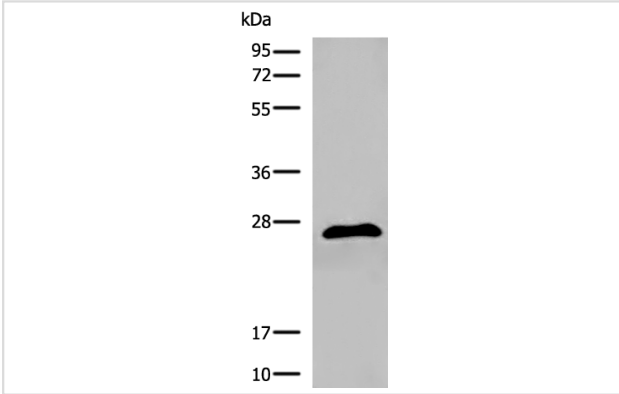
Images



The image is immunohistochemistry of paraffin-embedded Human brain tissue using 47049(DGCR6 Antibody) at dilution 1/20. (Original magnification: ?00)



The image is immunohistochemistry of paraffin-embedded Human lung cancer tissue using 47049(DGCR6 Antibody) at dilution 1/20. (Original magnification: 200)



Gel: 12%SDS-PAGE
Lysate: 40 µg, Lane: 293T cell lysate
Primary antibody:DGCR6 Antibody at dilution 1/300
Secondary antibody: Goat anti rabbit IgG at 1/8000 dilution
Exposure time: 20 seconds

Background

DiGeorge syndrome, and more widely, the CATCH 22 syndrome, are associated with microdeletions in chromosomal region 22q11.2. The product of this gene shares homology with the *Drosophila melanogaster* gonadal protein, which participates in gonadal and germ cell development, and with the gamma-1 subunit of human laminin. This gene is a candidate for involvement in DiGeorge syndrome pathology and in schizophrenia.?

Note: This product is for in vitro research use only