

DIMT1 Antibody

Catalog No: #47053

Orders: order@signalwayantibody.comSupport: tech@signalwayantibody.com

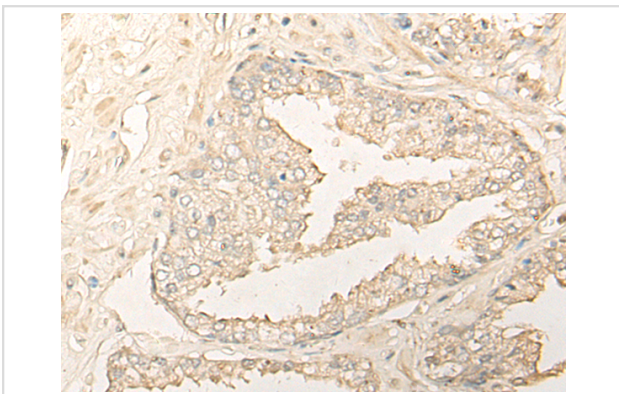
Description

Product Name	DIMT1 Antibody
Host Species	Rabbit
Clonality	Polyclonal
Purification	Antigen affinity purification
Applications	WB, IHC
Species Reactivity	Hu
Specificity	The antibody detects endogenous levels of total DIMT1 protein.
Immunogen Type	protein
Immunogen Description	Full length fusion protein
Target Name	DIMT1
Other Names	DIM1; DIMT1L; HUSSY5; HSA9761
Accession No.	Swiss-Prot#:Q9UNQ2NCBI Gene ID:27292Gene Accssion:BC010874
Uniprot	Q9UNQ2
GeneID	27292;
Calculated MW	35 kDa
Concentration	1.2mg/ml
Formulation	Rabbit IgG in pH7.4 PBS, 0.05% NaN ₃ , 40% Glycerol.
Storage	Store at -20C

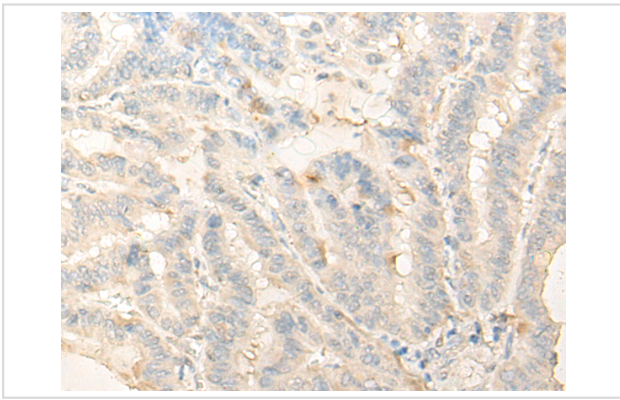
Application Details

Western blotting:1:500-2000Immunofluorescence:1: 20-100

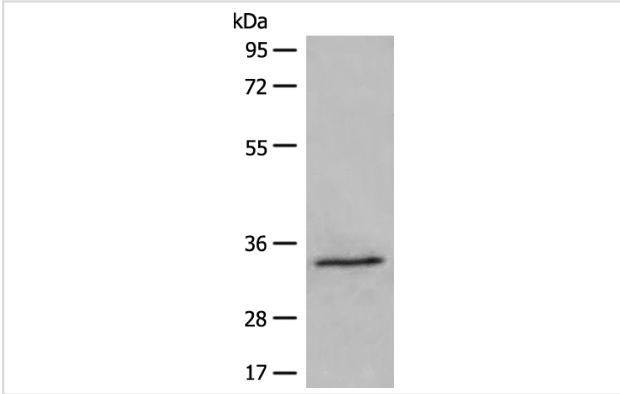
Images



The image is immunohistochemistry of paraffin-embedded Human prostate cancer tissue using 47053(DIMT1 Antibody) at dilution 1/35. (Original magnification: ?00)



The image is immunohistochemistry of paraffin-embedded Human thyroid cancer tissue using 47053(DIMT1 Antibody) at dilution 1/35. (Original magnification: 200)



Gel: 8%SDS-PAGE
Lysate: 40 µg, Lane: 231 cell lysate
Primary antibody: DIMT1 Antibody at dilution 1/500
Secondary antibody: Goat anti rabbit IgG at 1/8000 dilution
Exposure time: 5 seconds

Background

Specifically dimethylates two adjacent adenosines in the loop of a conserved hairpin near the 3'-end of 18S rRNA in the 40S particle.

Note: This product is for in vitro research use only