

DIP2B Antibody

Catalog No: #47054

Orders: order@signalwayantibody.comSupport: tech@signalwayantibody.com

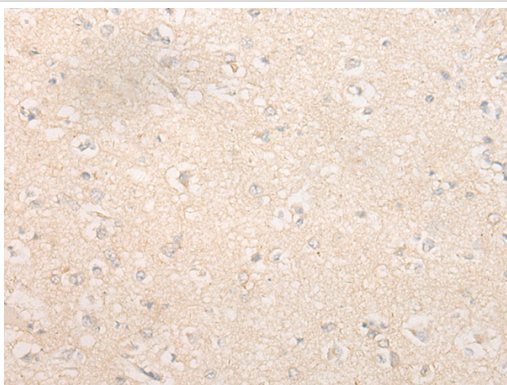
Description

Product Name	DIP2B Antibody
Host Species	Rabbit
Clonality	Polyclonal
Purification	Antigen affinity purification
Applications	WB, IHC
Species Reactivity	Hu
Specificity	The antibody detects endogenous levels of total DIP2B protein.
Immunogen Type	peptide
Immunogen Description	Synthetic peptide of human DIP2B
Target Name	DIP2B
Accession No.	Swiss-Prot#:Q9P265 NCBI Gene ID:57609Gene Accssion:NP_775873
Uniprot	Q9P265
GeneID	57609;
Calculated MW	172 kDa
Concentration	0.5mg/ml
Formulation	Rabbit IgG in pH7.4 PBS, 0.05% NaN ₃ , 40% Glycerol.
Storage	Store at -20C

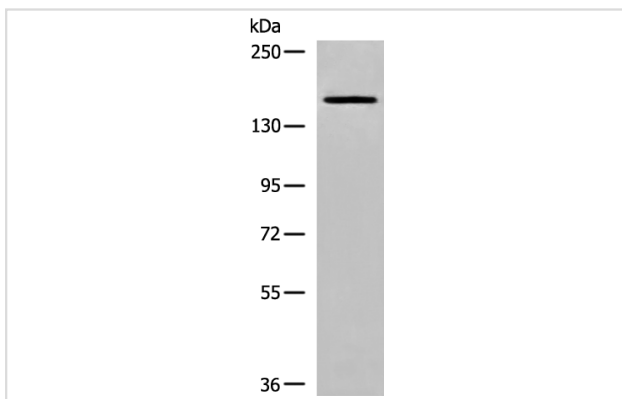
Application Details

Western blotting:1:200-1000Immunofluorescence:1: 20-100

Images



The image is immunohistochemistry of paraffin-embedded Human brain tissue using 47054(DIP2B Antibody) at dilution 1/20. (Original magnification: ?00)



Gel: 6%SDS-PAGE
Lysate: 40 µg, Lane: NIH/3T3 cell lysate
Primary antibody: DIP2B Antibody at dilution 1/200
Secondary antibody: Goat anti rabbit IgG at 1/8000 dilution
Exposure time: 5 minutes

Background

This gene encodes a member of the disco-interacting protein homolog 2 protein family. The encoded protein contains a binding site for the transcriptional regulator DNA methyltransferase 1 associated protein 1 as well as AMP-binding sites. The presence of these sites suggests that the encoded protein may participate in DNA methylation. This gene is located near a folate-sensitive fragile site, and CGG-repeat expansion in the promoter of this gene which affects transcription has been detected in individuals containing this fragile site on chromosome 12.?

Note: This product is for in vitro research use only