

## DIXDC1 Antibody

Catalog No: #47057

Orders: [order@signalwayantibody.com](mailto:order@signalwayantibody.com)Support: [tech@signalwayantibody.com](mailto:tech@signalwayantibody.com)

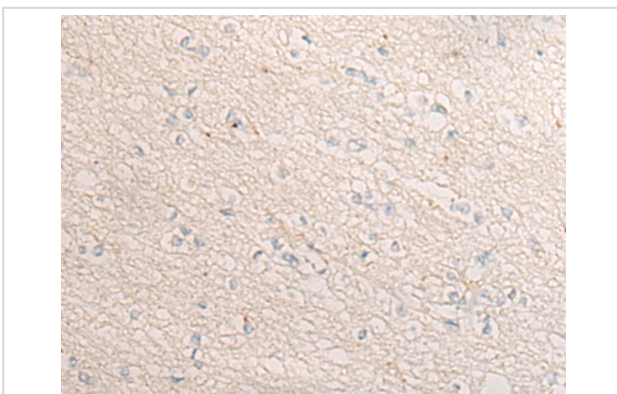
## Description

Product Name	DIXDC1 Antibody
Host Species	Rabbit
Clonality	Polyclonal
Purification	Antigen affinity purification
Applications	IHC
Species Reactivity	Hu
Specificity	The antibody detects endogenous levels of total DIXDC1 protein.
Immunogen Type	peptide
Immunogen Description	Synthetic peptide of human DIXDC1
Target Name	DIXDC1
Other Names	CCD1
Accession No.	Swiss-Prot#:Q155Q3 NCBI Gene ID:85458Gene Accssion:NP_001033043
Uniprot	Q155Q3
GeneID	85458;
Concentration	0.7mg/ml
Formulation	Rabbit IgG in pH7.4 PBS, 0.05% NaN <sub>3</sub> , 40% Glycerol.
Storage	Store at -20C

## Application Details

Immunofluorescence:1: 20-100

## Images



The image is immunohistochemistry of paraffin-embedded Human brain tissue using 47057(DIXDC1 Antibody) at dilution 1/20. (Original magnification: ?00)

## Background

The protein encoded by this gene is a positive regulator of the Wnt signaling pathway. The encoded protein is found associated with gamma tubulin at the centrosome. Alternative splicing results in multiple transcript variants encoding different isoforms.

---

Note: This product is for in vitro research use only