

DKKL1 Antibody

Catalog No: #47058

Orders: order@signalwayantibody.comSupport: tech@signalwayantibody.com

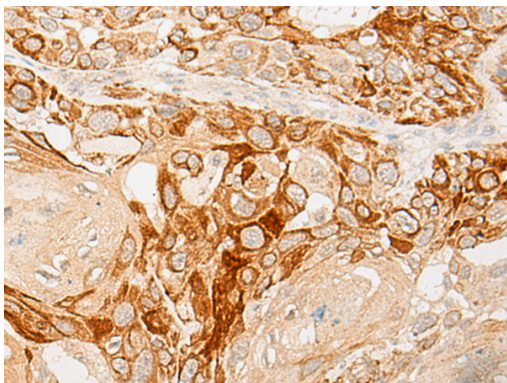
Description

Product Name	DKKL1 Antibody
Host Species	Rabbit
Clonality	Polyclonal
Purification	Antigen affinity purification
Applications	IHC
Species Reactivity	Hu
Specificity	The antibody detects endogenous levels of total DKKL1 protein.
Immunogen Type	peptide
Immunogen Description	Synthetic peptide of human DKKL1
Target Name	DKKL1
Other Names	SGY; CT34; SGY1; SGY-1
Accession No.	Swiss-Prot#:Q9UK85 NCBI Gene ID:27120Gene Accssion:NP_055234
Uniprot	Q9UK85
GeneID	27120;
Concentration	0.9mg/ml
Formulation	Rabbit IgG in pH7.4 PBS, 0.05% NaN ₃ , 40% Glycerol.
Storage	Store at -20C

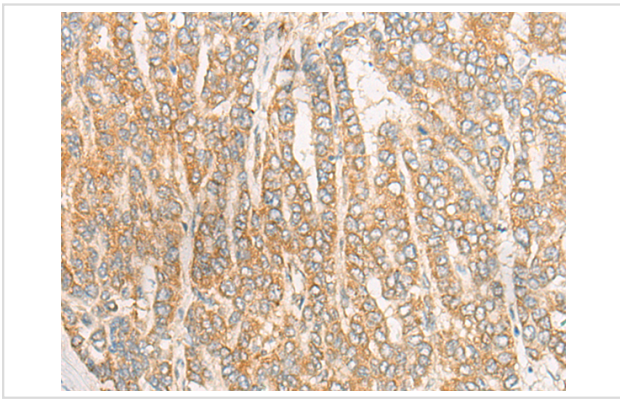
Application Details

Immunofluorescence:1: 25-100

Images



The image is immunohistochemistry of paraffin-embedded Human esophagus cancer tissue using 47058(DKKL1 Antibody) at dilution 1/20. (Original magnification: ?00)



The image is immunohistochemistry of paraffin-embedded Human liver cancer tissue using 47058(DKKL1 Antibody) at dilution 1/20. (Original magnification: 200)

Background

The dickkopf protein family interacts with the Wnt signaling pathway and its members are characterized by two conserved cysteine-rich domains. This gene encodes a secreted protein that has low sequence similarity to the dickkopf-3 protein. Multiple alternatively spliced transcript variants encoding distinct isoforms have been found for this gene.

Note: This product is for in vitro research use only