

DLL3 Antibody

Catalog No: #47063

Orders: order@signalwayantibody.comSupport: tech@signalwayantibody.com

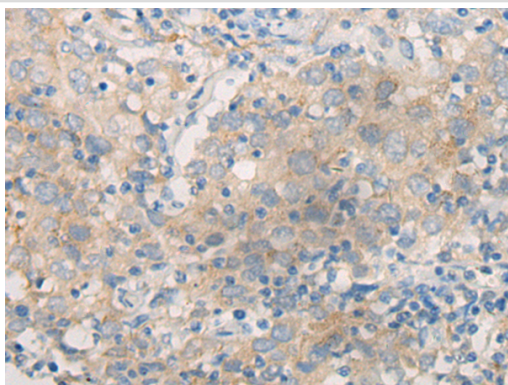
Description

Product Name	DLL3 Antibody
Host Species	Rabbit
Clonality	Polyclonal
Purification	Antigen affinity purification
Applications	WB, IHC
Species Reactivity	Hu
Specificity	The antibody detects endogenous levels of total DLL3 protein.
Immunogen Type	peptide
Immunogen Description	Synthetic peptide of human DLL3
Target Name	DLL3
Other Names	SCDO1
Accession No.	Swiss-Prot#:Q9NYJ7 NCBI Gene ID:10683Gene Accssion:NP_058637
Uniprot	Q9NYJ7
GeneID	10683;
Calculated MW	65 kDa
Concentration	0.5mg/ml
Formulation	Rabbit IgG in pH7.4 PBS, 0.05% NaN ₃ , 40% Glycerol.
Storage	Store at -20C

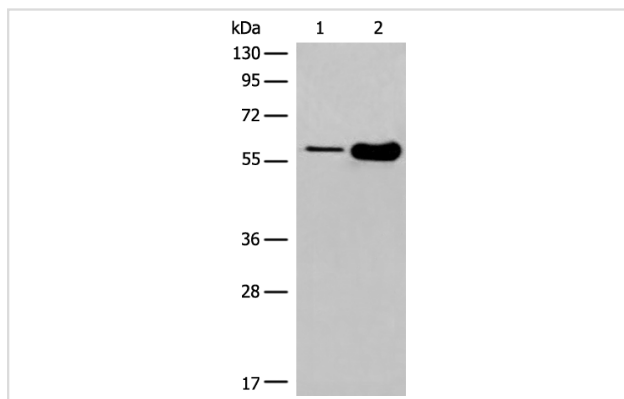
Application Details

Western blotting:1:200-1000Immunofluorescence:1: 20-100

Images



The image is immunohistochemistry of paraffin-embedded Human cervical cancer tissue using 47063(DLL3 Antibody) at dilution 1/20. (Original magnification: ?00)



Gel: 8%SDS-PAGE
Lysate: 40 µg, Lane 1-2: Mouse brain tissue and Human fetal brain tissue lysates
Primary antibody: DLL3 Antibody at dilution 1/200
Secondary antibody: Goat anti rabbit IgG at 1/8000 dilution
Exposure time: 5 minutes

Background

This gene encodes a member of the delta protein ligand family. This family functions as Notch ligands that are characterized by a DSL domain, EGF repeats, and a transmembrane domain. Mutations in this gene cause autosomal recessive spondylocostal dysostosis 1. Two transcript variants encoding distinct isoforms have been identified for this gene.

Note: This product is for in vitro research use only