

## WFDC1 Antibody

Catalog No: #40300

Orders: [order@signalwayantibody.com](mailto:order@signalwayantibody.com)Support: [tech@signalwayantibody.com](mailto:tech@signalwayantibody.com)

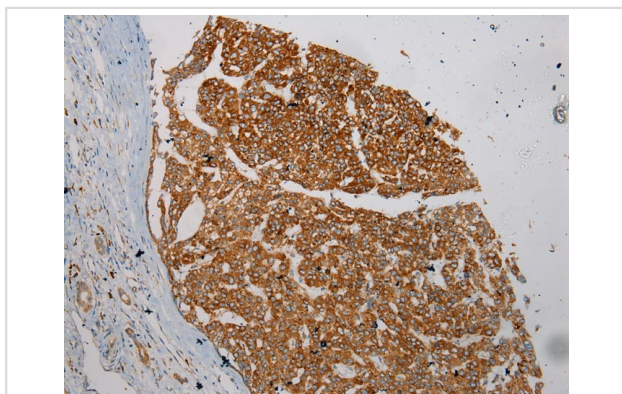
## Description

Product Name	WFDC1 Antibody
Host Species	Rabbit
Clonality	Polyclonal
Purification	Antigen affinity purification.
Applications	IHC
Species Reactivity	Hu
Specificity	The antibody detects endogenous levels of total WFDC1 protein.
Immunogen Type	Peptide
Immunogen Description	Synthetic peptide of human WAP four-disulfide core domain 1
Target Name	WFDC1
Other Names	PS20
Accession No.	Swiss-Prot:Q9HC57 Gene Accssion:NP_067020
Uniprot	Q9HC57
GeneID	58189;
Concentration	1.3mg/ml
Formulation	Rabbit IgG in pH7.4 PBS, 0.05% NaN <sub>3</sub> , 40% Glycerol.
Storage	Store at -20°C

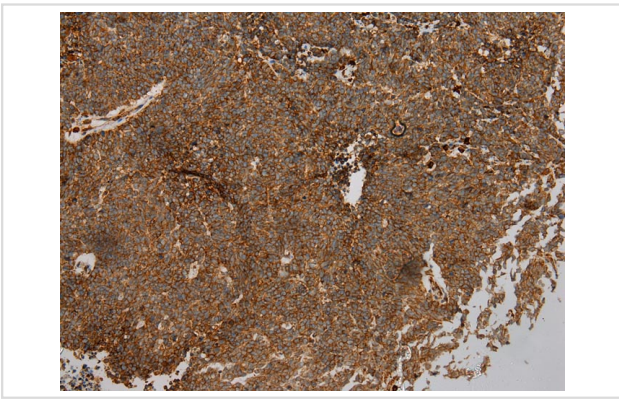
## Application Details

Immunohistochemistry: 1:100-1:200

## Images



Immunohistochemical analysis of paraffin-embedded Human Liver cancer tissue using #40300 at dilution 1/200.



Immunohistochemical analysis of paraffin-embedded Human Lung cancer tissue using #40300 at dilution 1/200.

## Background

This gene encodes a member of the WAP-type four disulfide core domain family. The WAP-type four-disulfide core domain contains eight cysteines forming four disulfide bonds at the core of the protein, and functions as a protease inhibitor in many family members. This gene is mapped to chromosome 16q24, an area of frequent loss of heterozygosity in cancers, including prostate, breast and hepatocellular cancers and Wilms' tumor. This gene is downregulated in many cancer types and may be involved in the inhibition of cell proliferation. The encoded protein may also play a role in the susceptibility of certain CD4 memory T cells to human immunodeficiency virus infection. Alternative splicing results in multiple transcript variants.

Note: This product is for in vitro research use only