

## DUOX2 Antibody

Catalog No: #47081

Orders: [order@signalwayantibody.com](mailto:order@signalwayantibody.com)Support: [tech@signalwayantibody.com](mailto:tech@signalwayantibody.com)

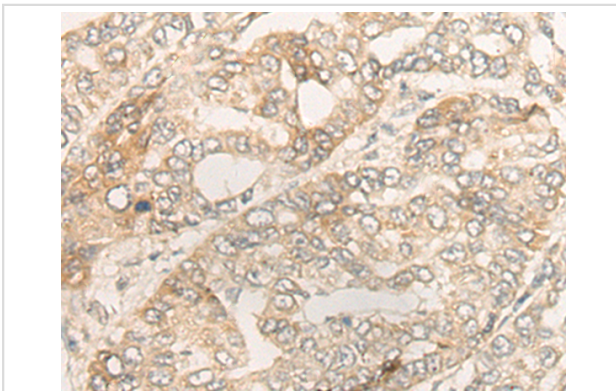
## Description

Product Name	DUOX2 Antibody
Host Species	Rabbit
Clonality	Polyclonal
Purification	Antigen affinity purification
Applications	IHC
Species Reactivity	Hu
Specificity	The antibody detects endogenous levels of total DUOX2 protein.
Immunogen Type	peptide
Immunogen Description	Synthetic peptide of human DUOX2
Target Name	DUOX2
Other Names	TDH6; LNOX2; THOX2; NOXEF2; P138-TOX
Accession No.	Swiss-Prot#:Q9NRD8 NCBI Gene ID:50506 Gene Accssion:NP_054799
Uniprot	Q9NRD8
GeneID	50506;
Concentration	1.6mg/ml
Formulation	Rabbit IgG in pH7.4 PBS, 0.05% NaN <sub>3</sub> , 40% Glycerol.
Storage	Store at -20C

## Application Details

Immunofluorescence:1: 20-100

## Images



The image is immunohistochemistry of paraffin-embedded Human liver cancer tissue using 47081(DUOX2 Antibody) at dilution 1/40. (Original magnification: ?00)

## Background

The protein encoded by this gene is a glycoprotein and a member of the NADPH oxidase family. The synthesis of thyroid hormone is catalyzed by a protein complex located at the apical membrane of thyroid follicular cells. This complex contains an iodide transporter, thyroperoxidase, and a peroxide generating system that includes this encoded protein and DUOX1. This protein is known as dual oxidase because it has both a peroxidase homology domain and a gp91phox domain.?

---

Note: This product is for in vitro research use only