

EBF2 Antibody

Catalog No: #47089

Orders: order@signalwayantibody.comSupport: tech@signalwayantibody.com

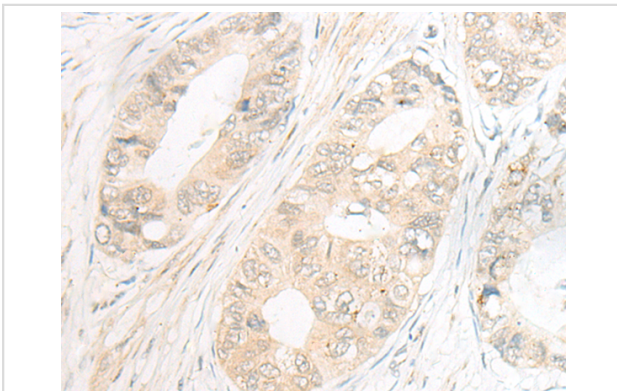
Description

Product Name	EBF2 Antibody
Host Species	Rabbit
Clonality	Polyclonal
Purification	Antigen affinity purification
Applications	IHC
Species Reactivity	Hu
Specificity	The antibody detects endogenous levels of total EBF2 protein.
Immunogen Type	peptide
Immunogen Description	Synthetic peptide of human EBF2
Target Name	EBF2
Other Names	COE2; OE-3; EBF-2; O/E-3
Accession No.	Swiss-Prot#:Q9HAK2 NCBI Gene ID:64641 Gene Accssion:NP_073150
Uniprot	Q9HAK2
GeneID	64641;
Concentration	1.1mg/ml
Formulation	Rabbit IgG in pH7.4 PBS, 0.05% NaN ₃ , 40% Glycerol.
Storage	Store at -20C

Application Details

Immunofluorescence:1: 20-100

Images



The image is immunohistochemistry of paraffin-embedded Human gastric cancer tissue using 47089(EBF2 Antibody) at dilution 1/30. (Original magnification: ?00)

Background

The protein encoded by this gene belongs to the COE (Collier/Olf/EBF) family of non-basic, helix-loop-helix transcription factors that have a well conserved DNA binding domain. The COE family proteins play an important role in variety of developmental processes. Studies in mouse suggest that this gene may be involved in the differentiation of osteoblasts.

Note: This product is for in vitro research use only