

## EBF2 Antibody

Catalog No: #47090

Orders: order@signalwayantibody.com

Support: tech@signalwayantibody.com

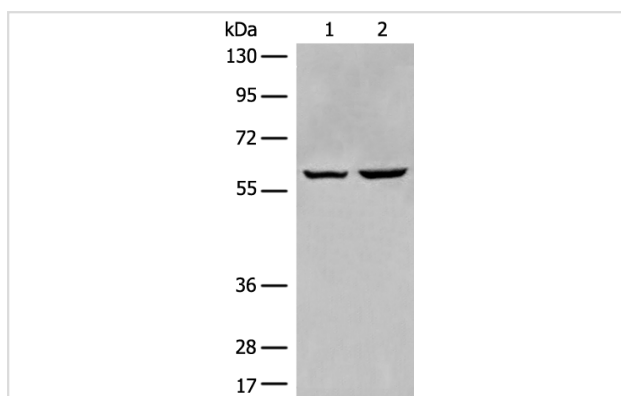
## Description

Product Name	EBF2 Antibody
Host Species	Rabbit
Clonality	Polyclonal
Purification	Antigen affinity purification
Applications	WB
Species Reactivity	Hu
Specificity	The antibody detects endogenous levels of total EBF2 protein.
Immunogen Type	peptide
Immunogen Description	Synthetic peptide of human EBF2
Target Name	EBF2
Other Names	COE2; OE-3; EBF-2; O/E-3
Accession No.	Swiss-Prot#:Q9HAK2NCBI Gene ID:64641Gene Accssion:NP_073150
Uniprot	Q9HAK2
GeneID	64641;
Calculated MW	63 kDa
Concentration	1.7mg/ml
Formulation	Rabbit IgG in pH7.4 PBS, 0.05% NaN <sub>3</sub> , 40% Glycerol.
Storage	Store at -20C

## Application Details

Western blotting:1:500-2000

## Images



Gel: 8%SDS-PAGE

Lysate: 40 µg, Lane 1-2: HEPG2 and Jurkat cell lysates

Primary antibody:EBF2 Antibody at dilution 1/650

Secondary antibody: Goat anti rabbit IgG at 1/8000 dilution

Exposure time: 20 seconds

## Background

The protein encoded by this gene is a member of the dual specificity protein phosphatase subfamily. These phosphatases inactivate their target kinases by dephosphorylating both the phosphoserine/threonine and phosphotyrosine residues. They negatively regulate members of the

mitogen-activated protein (MAP) kinase superfamily (MAPK/ERK, SAPK/JNK, p38), which are associated with cellular proliferation and differentiation. Different members of the family of dual specificity phosphatases show distinct substrate specificities for various MAP kinases, different tissue distribution and subcellular localization, and different modes of inducibility of their expression by extracellular stimuli. This gene product inactivates ERK1, is expressed in a variety of tissues with the highest levels in pancreas and brain, and is localized in the nucleus.

---

Note: This product is for in vitro research use only