

## EDEM1 Antibody

Catalog No: #47091

Orders: [order@signalwayantibody.com](mailto:order@signalwayantibody.com)Support: [tech@signalwayantibody.com](mailto:tech@signalwayantibody.com)

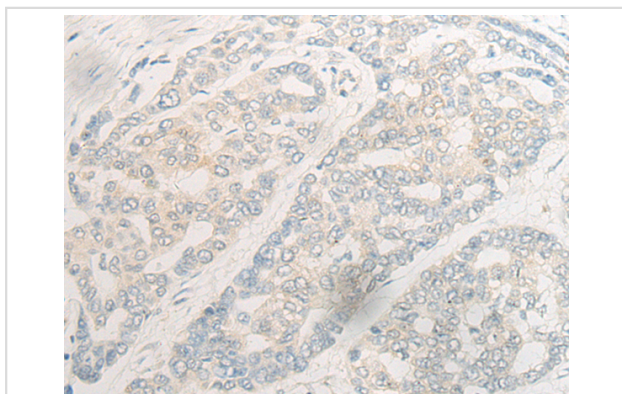
## Description

Product Name	EDEM1 Antibody
Host Species	Rabbit
Clonality	Polyclonal
Purification	Antigen affinity purification
Applications	IHC
Species Reactivity	Hu
Specificity	The antibody detects endogenous levels of total EDEM1 protein.
Immunogen Type	peptide
Immunogen Description	Synthetic peptide of human EDEM1
Target Name	EDEM1
Other Names	EDEM
Accession No.	Swiss-Prot#:Q92611 NCBI Gene ID:9695Gene Accssion:NP_055489
Uniprot	Q92611
GeneID	9695;
Concentration	0.8mg/ml
Formulation	Rabbit IgG in pH7.4 PBS, 0.05% NaN <sub>3</sub> , 40% Glycerol.
Storage	Store at -20C

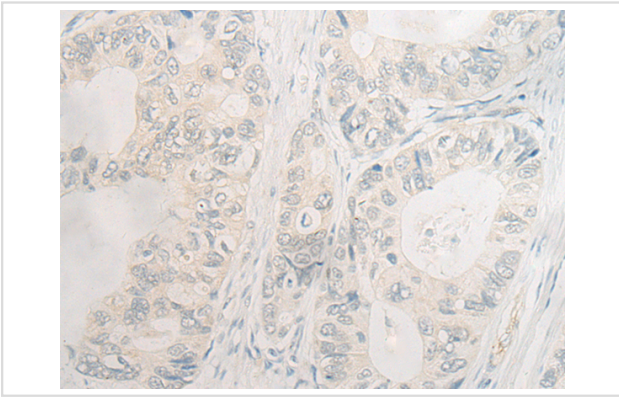
## Application Details

Immunofluorescence:1: 20-100

## Images



The image is immunohistochemistry of paraffin-embedded Human liver cancer tissue using 47091(EDEM1 Antibody) at dilution 1/20. (Original magnification: 200)



The image is immunohistochemistry of paraffin-embedded Human gastric cancer tissue using 47091 (EDEM1 Antibody) at dilution 1/20. (Original magnification: ?00)

## Background

Extracts misfolded glycoproteins, but not glycoproteins undergoing productive folding, from the calnexin cycle. It is directly involved in endoplasmic reticulum-associated degradation (ERAD) and targets misfolded glycoproteins for degradation in an N-glycan-independent manner, probably by forming a complex with SEL1L. It has low mannosidase activity, catalyzing mannose trimming from Man8GlcNAc2 to Man7GlcNAc2.

Note: This product is for in vitro research use only