

EIF2B5 Antibody

Catalog No: #47095

Orders: order@signalwayantibody.com

Support: tech@signalwayantibody.com

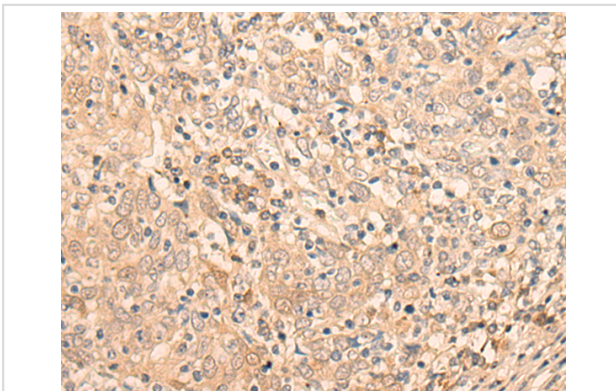
Description

Product Name	EIF2B5 Antibody
Host Species	Rabbit
Clonality	Polyclonal
Purification	Antigen affinity purification
Applications	IHC
Species Reactivity	Hu
Specificity	The antibody detects endogenous levels of total EIF2B5 protein.
Immunogen Type	peptide
Immunogen Description	Synthetic peptide of human EIF2B5
Target Name	EIF2B5
Other Names	CLE; CACH; LVWM; EIF-2B; EIF2Bepsilon
Accession No.	Swiss-Prot#:Q13144 NCBI Gene ID:8893Gene Accssion:NP_003898
Uniprot	Q13144
GeneID	8893;
Concentration	1mg/ml
Formulation	Rabbit IgG in pH7.4 PBS, 0.05% NaN ₃ , 40% Glycerol.
Storage	Store at -20C

Application Details

Immunofluorescence:1: 20-100

Images



The image is immunohistochemistry of paraffin-embedded Human cervical cancer tissue using 47095(EIF2B5 Antibody) at dilution 1/25. (Original magnification: ?00)

Background

This gene encodes one of five subunits of eukaryotic translation initiation factor 2B (EIF2B), a GTP exchange factor for eukaryotic initiation factor 2 and an essential regulator for protein synthesis. Mutations in this gene and the genes encoding other EIF2B subunits have been associated with leukoencephalopathy with vanishing white matter.

Note: This product is for in vitro research use only