

## EIF2D Antibody

Catalog No: #47096

Orders: [order@signalwayantibody.com](mailto:order@signalwayantibody.com)Support: [tech@signalwayantibody.com](mailto:tech@signalwayantibody.com)

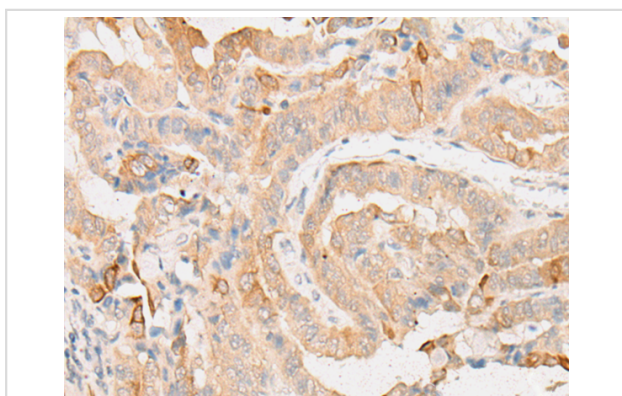
## Description

Product Name	EIF2D Antibody
Host Species	Rabbit
Clonality	Polyclonal
Purification	Antigen affinity purification
Applications	IHC
Species Reactivity	Hu
Specificity	The antibody detects endogenous levels of total EIF2D protein.
Immunogen Type	peptide
Immunogen Description	Synthetic peptide of human EIF2D
Target Name	EIF2D
Other Names	LGTN; HCA56
Accession No.	Swiss-Prot#:P41214 NCBI Gene ID:1939Gene Accssion:NP_008824
Uniprot	P41214
GeneID	1939;
Concentration	1mg/ml
Formulation	Rabbit IgG in pH7.4 PBS, 0.05% NaN <sub>3</sub> , 40% Glycerol.
Storage	Store at -20C

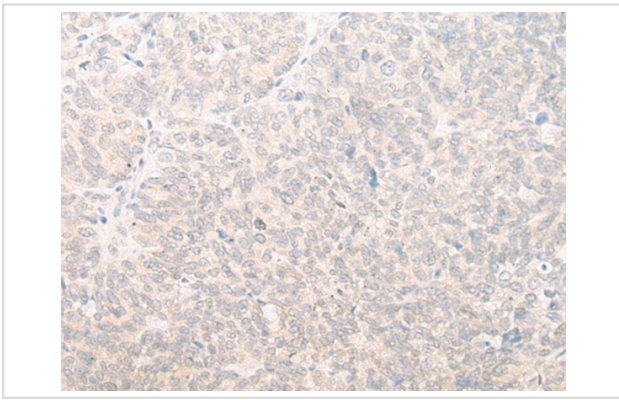
## Application Details

Immunofluorescence:1: 25-100

## Images



The image is immunohistochemistry of paraffin-embedded Human thyroid cancer tissue using 47096(EIF2D Antibody) at dilution 1/25. (Original magnification: ?00)



The image is immunohistochemistry of paraffin-embedded Human ovarian cancer tissue using 47096(EIF2D Antibody) at dilution 1/25. (Original magnification: 200)

## Background

This gene encodes a translation initiation factor involved in the recruitment and delivery of aminoacyl-tRNAs to the P-site of the eukaryotic ribosome in a GTP-independent manner. This gene was previously referred to as ligatin, but is now known to localize to the cytoplasm and localize and function with translation factors. Multiple transcript variants encoding different isoforms have been found for this gene.

Note: This product is for in vitro research use only