

## EIF3B Antibody

Catalog No: #47098

Orders: [order@signalwayantibody.com](mailto:order@signalwayantibody.com)Support: [tech@signalwayantibody.com](mailto:tech@signalwayantibody.com)

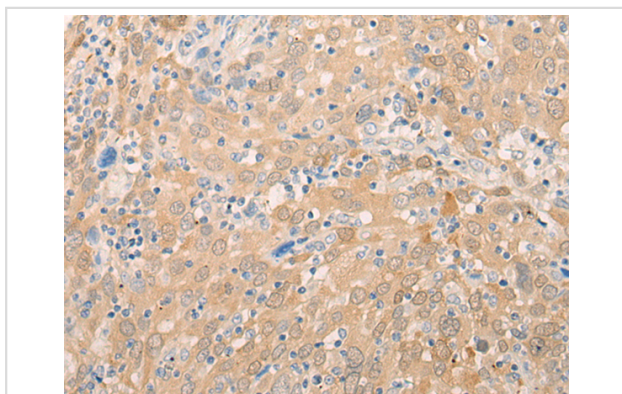
## Description

Product Name	EIF3B Antibody
Host Species	Rabbit
Clonality	Polyclonal
Purification	Antigen affinity purification
Applications	IHC
Species Reactivity	Hu
Specificity	The antibody detects endogenous levels of total EIF3B protein.
Immunogen Type	peptide
Immunogen Description	Synthetic peptide of human EIF3B
Target Name	EIF3B
Other Names	PRT1; EIF3S9; EIF3-ETA; EIF3-P110; EIF3-P116
Accession No.	Swiss-Prot#:P55884 NCBI Gene ID:8662Gene Accssion:NP_003742
Uniprot	P55884
GeneID	8662;
Concentration	0.7mg/ml
Formulation	Rabbit IgG in pH7.4 PBS, 0.05% NaN <sub>3</sub> , 40% Glycerol.
Storage	Store at -20C

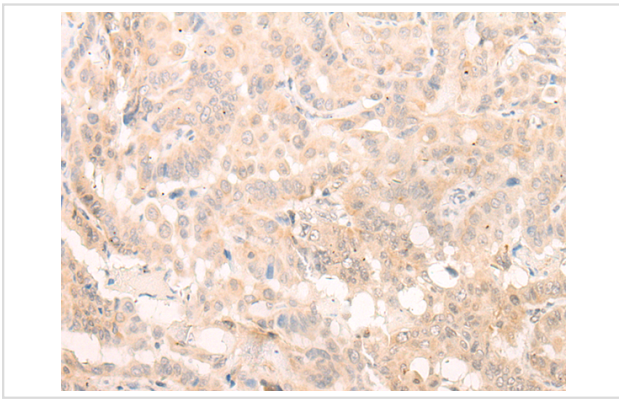
## Application Details

Immunofluorescence:1: 20-100

## Images



The image is immunohistochemistry of paraffin-embedded Human cervical cancer tissue using 47098(EIF3B Antibody) at dilution 1/20. (Original magnification: 200)



The image is immunohistochemistry of paraffin-embedded Human thyroid cancer tissue using 47098(EIF3B Antibody) at dilution 1/20. (Original magnification: 200)

## Background

Eukaryotic initiation factor 3 subunit B (eIF3B) is one of at least 13 non-identical protein subunits of eukaryotic initiation factor 3 (eIF3). eIF3 is the largest eIF (~650 kDa) and functions to facilitate binding of the 40S ribosomal subunit to the 5'-end of cellular mRNAs near the cap structure (m<sup>7</sup>GpppN). eIF3B is a conserved subunit and part of the functional core of eIF3. It bears a non-canonical RNA recognition motif (RRM) and interacts directly with the eIF3S1 subunit.

Note: This product is for in vitro research use only