

ELANE Antibody

Catalog No: #47101

Orders: order@signalwayantibody.comSupport: tech@signalwayantibody.com

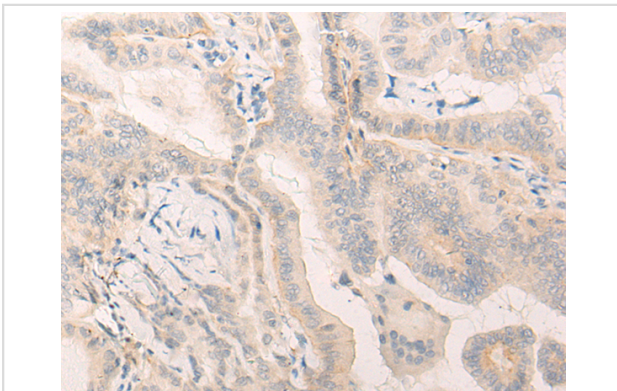
Description

Product Name	ELANE Antibody
Host Species	Rabbit
Clonality	Polyclonal
Purification	Antigen affinity purification
Applications	IHC
Species Reactivity	Hu
Specificity	The antibody detects endogenous levels of total ELANE protein.
Immunogen Type	peptide
Immunogen Description	Synthetic peptide of human ELANE
Target Name	ELANE
Other Names	GE; NE; HLE; HNE; ELA2; SCN1; PMN-E
Accession No.	Swiss-Prot#:P08246 NCBI Gene ID:1991Gene Accssion:NP_001963
Uniprot	P08246
GeneID	1991;
Concentration	0.9mg/ml
Formulation	Rabbit IgG in pH7.4 PBS, 0.05% NaN ₃ , 40% Glycerol.
Storage	Store at -20C

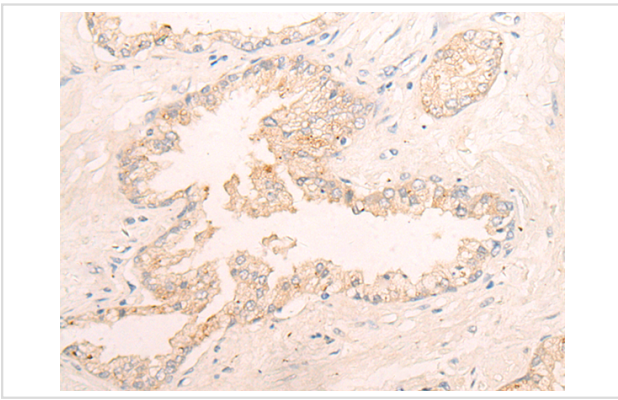
Application Details

Immunofluorescence:1: 20-100

Images



The image is immunohistochemistry of paraffin-embedded Human thyroid cancer tissue using 47101(ELANE Antibody) at dilution 1/25. (Original magnification: 200)



The image is immunohistochemistry of paraffin-embedded Human prostate cancer tissue using 47101(ELANE Antibody) at dilution 1/25. (Original magnification: ?00)

Background

Elastases form a subfamily of serine proteases that hydrolyze many proteins in addition to elastin. Humans have six elastase genes which encode structurally similar proteins. The encoded preproprotein is proteolytically processed to generate the active protease. Following activation, this protease hydrolyzes proteins within specialized neutrophil lysosomes, called azurophil granules, as well as proteins of the extracellular matrix. The enzyme may play a role in degenerative and inflammatory diseases through proteolysis of collagen-IV and elastin. This protein also degrades the outer membrane protein A (OmpA) of *E. coli* as well as the virulence factors of such bacteria as *Shigella*, *Salmonella* and *Yersinia*. Mutations in this gene are associated with cyclic neutropenia and severe congenital neutropenia (SCN). This gene is present in a gene cluster on chromosome 19.

Note: This product is for in vitro research use only