

EME2 Antibody

Catalog No: #47104

Orders: order@signalwayantibody.comSupport: tech@signalwayantibody.com

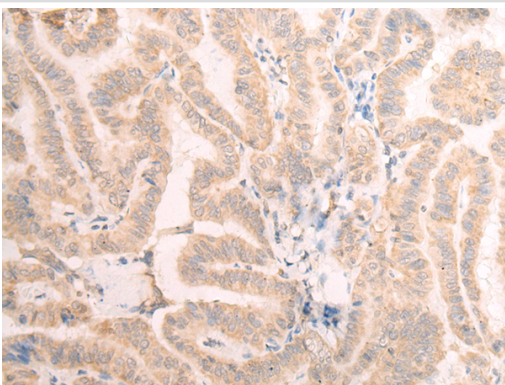
Description

Product Name	EME2 Antibody
Host Species	Rabbit
Clonality	Polyclonal
Purification	Antigen affinity purification
Applications	WB, IHC
Species Reactivity	Hu
Specificity	The antibody detects endogenous levels of total EME2 protein.
Immunogen Type	peptide
Immunogen Description	Synthetic peptide of human EME2
Target Name	EME2
Other Names	SLX2B; gs125
Accession No.	Swiss-Prot#:A4GXA9NCBI Gene ID:197342Gene Accssion:NP_001244299
Uniprot	A4GXA9
GeneID	197342;
Calculated MW	41 kDa
Concentration	0.4mg/ml
Formulation	Rabbit IgG in pH7.4 PBS, 0.05% NaN ₃ , 40% Glycerol.
Storage	Store at -20C

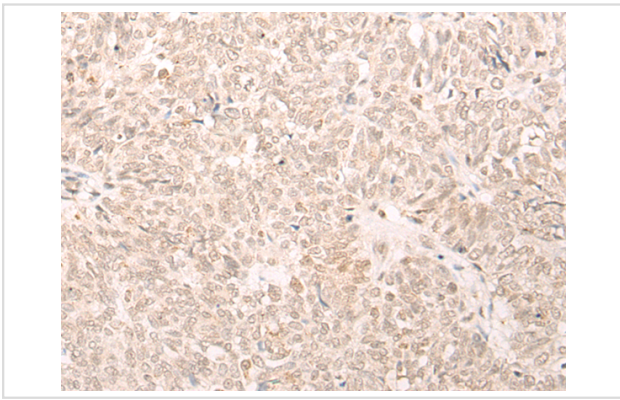
Application Details

Western blotting:1:200-1000Immunofluorescence:1: 20-100

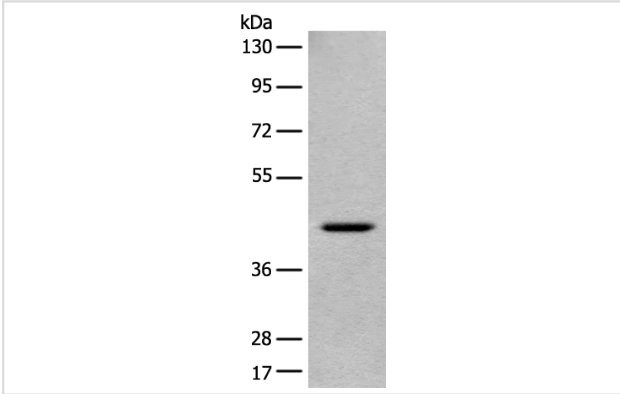
Images



The image is immunohistochemistry of paraffin-embedded Human thyroid cancer tissue using 47104(EME2 Antibody) at dilution 1/25. (Original magnification: ?00)



The image is immunohistochemistry of paraffin-embedded Human ovarian cancer tissue using 47104(EME2 Antibody) at dilution 1/25. (Original magnification: 200)



Gel: 8%SDS-PAGE
Lysate: 40 µg, Lane: 231 cell lysate
Primary antibody:EME2 Antibody at dilution 1/200
Secondary antibody: Goat anti rabbit IgG at 1/8000 dilution
Exposure time: 2 minutes

Background

Interacts with MUS81 to form a DNA structure-specific endonuclease which cleaves substrates such as 3'-flap structures.

Note: This product is for in vitro research use only