

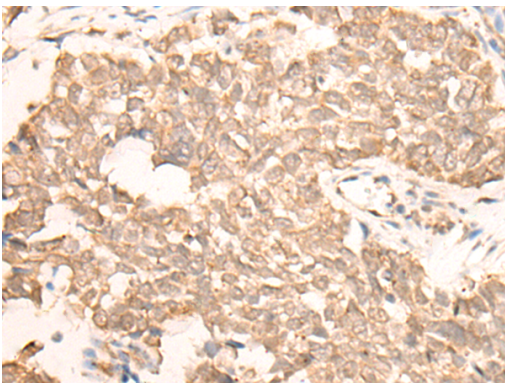
Description

| | |
|-----------------------|---|
| Product Name | EMSY Antibody |
| Host Species | Rabbit |
| Clonality | Polyclonal |
| Purification | Antigen affinity purification |
| Applications | IHC |
| Species Reactivity | Hu |
| Specificity | The antibody detects endogenous levels of total EMSY protein. |
| Immunogen Type | peptide |
| Immunogen Description | Synthetic peptide of human EMSY |
| Target Name | EMSY |
| Other Names | GL002; C11orf30 |
| Accession No. | Swiss-Prot#:Q7Z589 NCBI Gene ID:56946Gene Accsion:NP_064578 |
| Uniprot | Q7Z589 |
| GeneID | 56946; |
| Concentration | 0.6mg/ml |
| Formulation | Rabbit IgG in pH7.4 PBS, 0.05% NaN ₃ , 40% Glycerol. |
| Storage | Store at -20C |

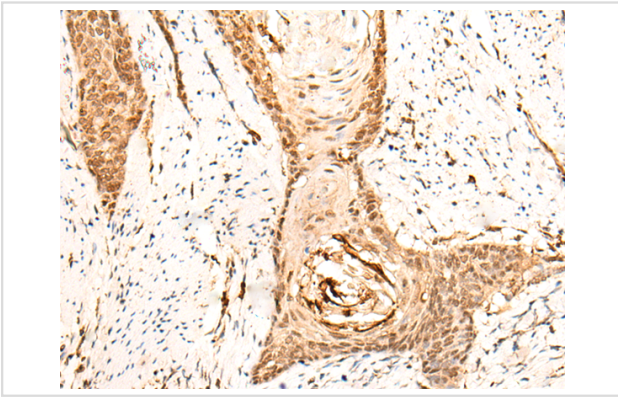
Application Details

Immunofluorescence:1: 20-100

Images



The image is immunohistochemistry of paraffin-embedded Human lung cancer tissue using 47105(EMSY Antibody) at dilution 1/25. (Original magnification: ?00)



The image is immunohistochemistry of paraffin-embedded Human esophagus cancer tissue using 47105(EMSY Antibody) at dilution 1/25. (Original magnification: ?00)

Background

Regulator which is able to repress transcription, possibly via its interaction with a multiprotein chromatin remodeling complex that modifies the chromatin. Its interaction with BRCA2 suggests that it may play a central role in the DNA repair function of BRCA2. As part of a histone H3-specific methyltransferase complex may mediate ligand-dependent transcriptional activation by nuclear hormone receptors.

Note: This product is for in vitro research use only