

## EMX1 Antibody

Catalog No: #47106

Orders: [order@signalwayantibody.com](mailto:order@signalwayantibody.com)Support: [tech@signalwayantibody.com](mailto:tech@signalwayantibody.com)

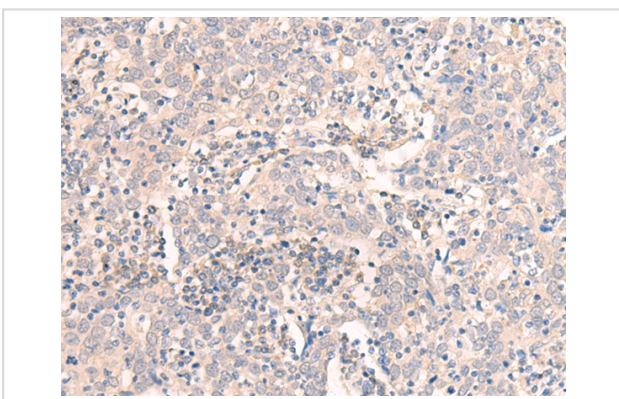
## Description

Product Name	EMX1 Antibody
Host Species	Rabbit
Clonality	Polyclonal
Purification	Antigen affinity purification
Applications	IHC
Species Reactivity	Hu
Specificity	The antibody detects endogenous levels of total EMX1 protein.
Immunogen Type	peptide
Immunogen Description	Synthetic peptide of human EMX1
Target Name	EMX1
Accession No.	Swiss-Prot#:Q04741 NCBI Gene ID:2016Gene Accssion:NP_004088
Uniprot	Q04741
GeneID	2016;
Concentration	1mg/ml
Formulation	Rabbit IgG in pH7.4 PBS, 0.05% NaN <sub>3</sub> , 40% Glycerol.
Storage	Store at -20C

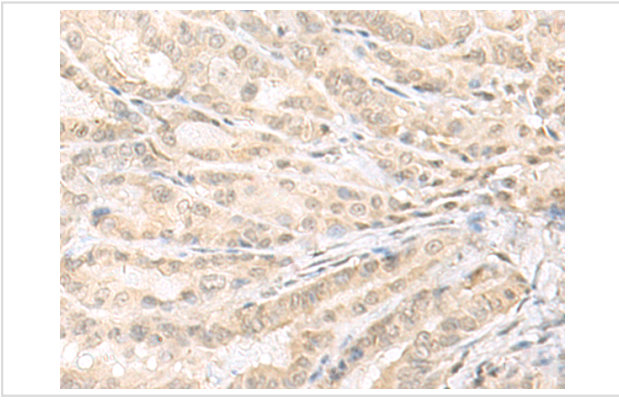
## Application Details

Immunofluorescence:1: 20-100

## Images



The image is immunohistochemistry of paraffin-embedded Human cervical cancer tissue using 47106(EMX1 Antibody) at dilution 1/25. (Original magnification: 200)



The image is immunohistochemistry of paraffin-embedded Human thyroid cancer tissue using 47106(EMX1 Antibody) at dilution 1/25. (Original magnification: 200)

## Background

Transcription factor, which in cooperation with EMX2, acts to generate the boundary between the roof and archipallium in the developing brain. May function in combinations with OTX1/2 to specify cell fates in the developing central nervous system.

Note: This product is for in vitro research use only