

EN1 Antibody

Catalog No: #47107

Orders: order@signalwayantibody.comSupport: tech@signalwayantibody.com

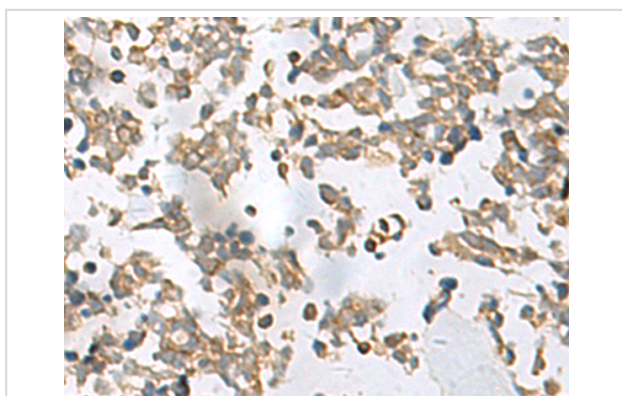
Description

Product Name	EN1 Antibody
Host Species	Rabbit
Clonality	Polyclonal
Purification	Antigen affinity purification
Applications	WB, IHC
Species Reactivity	Hu
Specificity	The antibody detects endogenous levels of total EN1 protein.
Immunogen Type	peptide
Immunogen Description	Synthetic peptide of human EN1
Target Name	EN1
Accession No.	Swiss-Prot#:Q05925NCBI Gene ID:2019Gene Accssion:NP_001417
Uniprot	Q05925
GeneID	2019;
Calculated MW	40 kDa
Concentration	0.8mg/ml
Formulation	Rabbit IgG in pH7.4 PBS, 0.05% NaN ₃ , 40% Glycerol.
Storage	Store at -20C

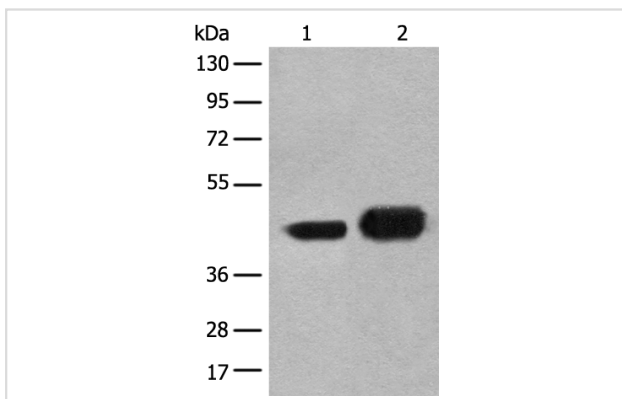
Application Details

Western blotting:1:500-2000Immunofluorescence:1: 20-100

Images



The image is immunohistochemistry of paraffin-embedded Human lung cancer tissue using 47107(EN1 Antibody) at dilution 1/20. (Original magnification: 200)



Gel: 8%SDS-PAGE

Lysate: 40 µg, Lane 1-2: A172 and HEPG2 cell lysates

Primary antibody: EN1 Antibody at dilution 1/300

Secondary antibody: Goat anti rabbit IgG at 1/8000 dilution

Exposure time: 5 seconds

Background

Homeobox-containing genes are thought to have a role in controlling development. In *Drosophila*, the 'engrailed' (*en*) gene plays an important role during development in segmentation, where it is required for the formation of posterior compartments. Different mutations in the mouse homologs, *En1* and *En2*, produced different developmental defects that frequently are lethal. The human engrailed homologs 1 and 2 encode homeodomain-containing proteins and have been implicated in the control of pattern formation during development of the central nervous system.

Note: This product is for in vitro research use only