

EN2 Antibody

Catalog No: #47108

Orders: order@signalwayantibody.comSupport: tech@signalwayantibody.com

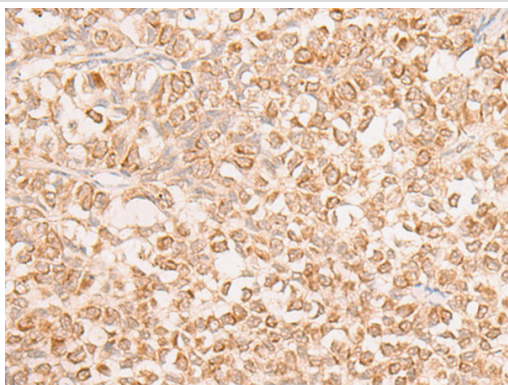
Description

Product Name	EN2 Antibody
Host Species	Rabbit
Clonality	Polyclonal
Purification	Antigen affinity purification
Applications	WB, IHC
Species Reactivity	Hu
Specificity	The antibody detects endogenous levels of total EN2 protein.
Immunogen Type	peptide
Immunogen Description	Synthetic peptide of human EN2
Target Name	EN2
Accession No.	Swiss-Prot#:P19622NCBI Gene ID:2020Gene Accssion:NP_001418
Uniprot	P19622
GeneID	2020;
Calculated MW	34 kDa
Concentration	1mg/ml
Formulation	Rabbit IgG in pH7.4 PBS, 0.05% NaN ₃ , 40% Glycerol.
Storage	Store at -20C

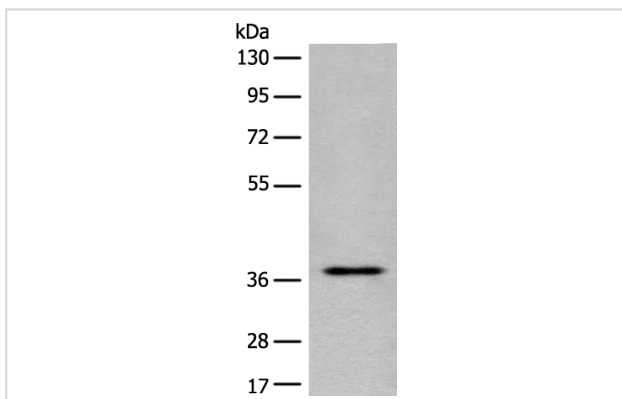
Application Details

Western blotting:1:500-2000Immunofluorescence:1: 20-100

Images



The image is immunohistochemistry of paraffin-embedded Human ovarian cancer tissue using 47108(EN2 Antibody) at dilution 1/20. (Original magnification: 200)



Gel: 8%SDS-PAGE
Lysate: 40 µg, Lane: Jurkat cell lysate
Primary antibody: EN2 Antibody at dilution 1/400
Secondary antibody: Goat anti rabbit IgG at 1/8000 dilution
Exposure time: 5 minutes

Background

Homeobox-containing genes are thought to have a role in controlling development. In *Drosophila*, the 'engrailed' (*en*) gene plays an important role during development in segmentation, where it is required for the formation of posterior compartments. Different mutations in the mouse homologs, *En1* and *En2*, produced different developmental defects that frequently are lethal. The human engrailed homologs 1 and 2 encode homeodomain-containing proteins and have been implicated in the control of pattern formation during development of the central nervous system.

Note: This product is for in vitro research use only