

ENOSF1 Antibody

Catalog No: #47110

Orders: order@signalwayantibody.comSupport: tech@signalwayantibody.com

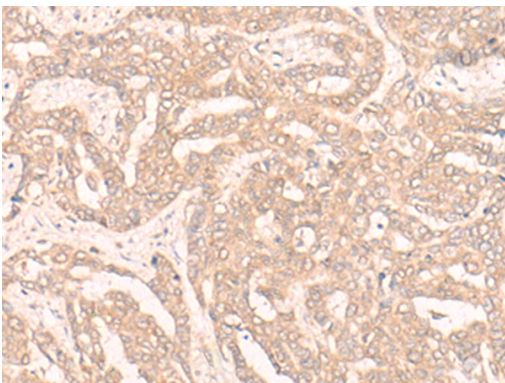
Description

Product Name	ENOSF1 Antibody
Host Species	Rabbit
Clonality	Polyclonal
Purification	Antigen affinity purification
Applications	IHC
Species Reactivity	Hu
Specificity	The antibody detects endogenous levels of total ENOSF1 protein.
Immunogen Type	peptide
Immunogen Description	Synthetic peptide of human ENOSF1
Target Name	ENOSF1
Other Names	RTS; TYMSAS
Accession No.	Swiss-Prot#:Q7L5Y1 NCBI Gene ID:55556Gene Accsion:NP_059982
Uniprot	Q7L5Y1
GeneID	55556;
Concentration	0.7mg/ml
Formulation	Rabbit IgG in pH7.4 PBS, 0.05% NaN ₃ , 40% Glycerol.
Storage	Store at -20C

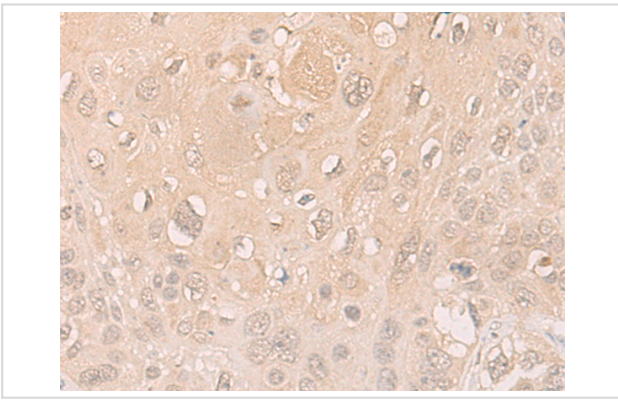
Application Details

Immunofluorescence:1: 20-100

Images



The image is immunohistochemistry of paraffin-embedded Human liver cancer tissue using 47110(ENOSF1 Antibody) at dilution 1/20. (Original magnification: 200)



The image is immunohistochemistry of paraffin-embedded Human esophagus cancer tissue using 47110(ENOSF1 Antibody) at dilution 1/20. (Original magnification: ?00)

Background

This gene was originally identified as a naturally occurring antisense transcript to the human thymidylate synthase gene. Alternate splice variants have been described, one of which (named rTSalpha) represents an alternate 3'UTR that is complementary to the 3'UTR and terminal intron of the thymidylate synthase (TS) RNA and down-regulates TS expression. Other transcript variants (rTSbeta and rTSgamma) do not overlap the TS locus. The function of this gene appears to be primarily to regulate expression of the TS locus both via the antisense transcript as well as through the encoded proteins.?

Note: This product is for in vitro research use only