

ESCO1 Antibody

Catalog No: #47113

Orders: order@signalwayantibody.comSupport: tech@signalwayantibody.com

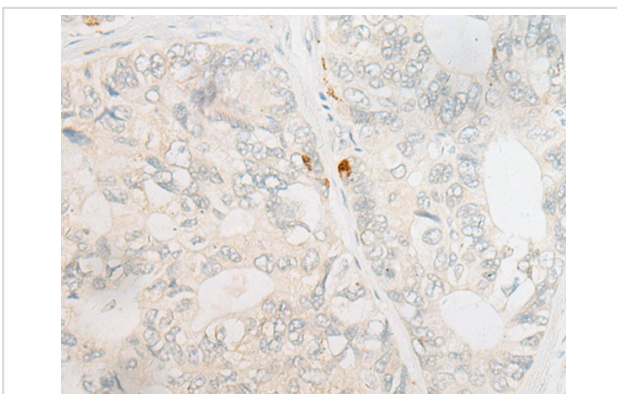
Description

Product Name	ESCO1 Antibody
Host Species	Rabbit
Clonality	Polyclonal
Purification	Antigen affinity purification
Applications	IHC
Species Reactivity	Hu
Specificity	The antibody detects endogenous levels of total ESCO1 protein.
Immunogen Type	peptide
Immunogen Description	Synthetic peptide of human ESCO1
Target Name	ESCO1
Other Names	CTF; ECO1; EFO1; ESO1; A930014I12Rik
Accession No.	Swiss-Prot#:Q5FWF5 NCBI Gene ID:114799Gene Accssion:NP_443143
Uniprot	Q5FWF5
GeneID	114799;
Concentration	0.6mg/ml
Formulation	Rabbit IgG in pH7.4 PBS, 0.05% NaN ₃ , 40% Glycerol.
Storage	Store at -20C

Application Details

Immunofluorescence:1: 20-100

Images



The image is immunohistochemistry of paraffin-embedded Human gastric cancer tissue using 47113(ESCO1 Antibody) at dilution 1/20. (Original magnification: ?00)

Background

ESCO1 belongs to a conserved family of acetyltransferases involved in sister chromatid cohesion (Hou and Zou, 2005 [PubMed 15958495]).

Note: This product is for in vitro research use only