

EVPL Antibody

Catalog No: #47114

Orders: order@signalwayantibody.comSupport: tech@signalwayantibody.com

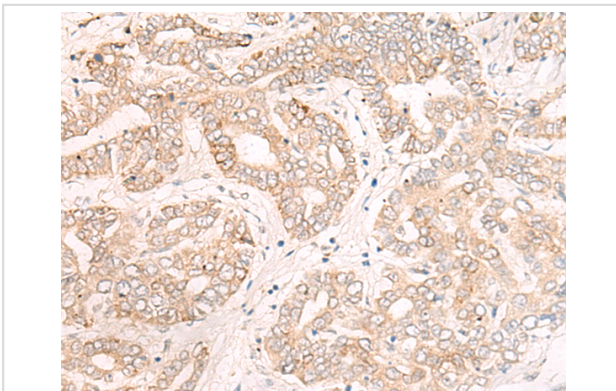
Description

Product Name	EVPL Antibody
Host Species	Rabbit
Clonality	Polyclonal
Purification	Antigen affinity purification
Applications	IHC
Species Reactivity	Hu
Specificity	The antibody detects endogenous levels of total EVPL protein.
Immunogen Type	peptide
Immunogen Description	Synthetic peptide of human EVPL
Target Name	EVPL
Other Names	EVPK
Accession No.	Swiss-Prot#:Q92817 NCBI Gene ID:2125Gene Accssion:NP_001979
Uniprot	Q92817
GeneID	2125;
Concentration	0.5mg/ml
Formulation	Rabbit IgG in pH7.4 PBS, 0.05% NaN ₃ , 40% Glycerol.
Storage	Store at -20C

Application Details

Immunofluorescence:1: 25-100

Images



The image is immunohistochemistry of paraffin-embedded Human liver cancer tissue using 47114(EVPL Antibody) at dilution 1/20. (Original magnification: ?00)

Background

This gene encodes a member of the plakin family of proteins that forms a component of desmosomes and the epidermal cornified envelope. This gene is located in the tylosis oesophageal cancer locus on chromosome 17q25, and its deletion is associated with both familial and sporadic forms of oesophageal squamous cell carcinoma. Patients suffering from the autoimmune mucocutaneous disorder, paraneoplastic pemphigus, develop antibodies against the encoded protein.?

Note: This product is for in vitro research use only