

## FAN1 Antibody

Catalog No: #47122

Orders: [order@signalwayantibody.com](mailto:order@signalwayantibody.com)Support: [tech@signalwayantibody.com](mailto:tech@signalwayantibody.com)

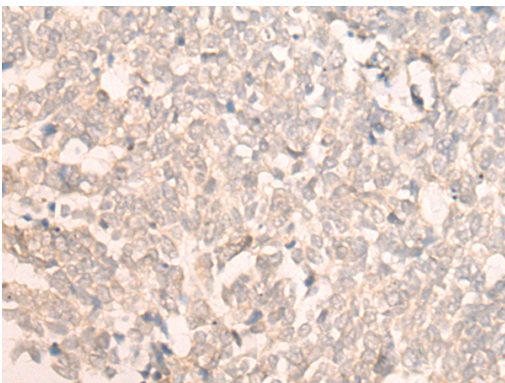
## Description

Product Name	FAN1 Antibody
Host Species	Rabbit
Clonality	Polyclonal
Purification	Antigen affinity purification
Applications	IHC
Species Reactivity	Hu
Specificity	The antibody detects endogenous levels of total FAN1 protein.
Immunogen Type	peptide
Immunogen Description	Synthetic peptide of human FAN1
Target Name	FAN1
Other Names	KMIN; hFAN1; MTMR15; KIAA1018
Accession No.	Swiss-Prot#:Q9Y2M0 NCBI Gene ID:22909 Gene Accssion:NP_055782
Uniprot	Q9Y2M0
GeneID	22909;
Concentration	0.6mg/ml
Formulation	Rabbit IgG in pH7.4 PBS, 0.05% NaN <sub>3</sub> , 40% Glycerol.
Storage	Store at -20C

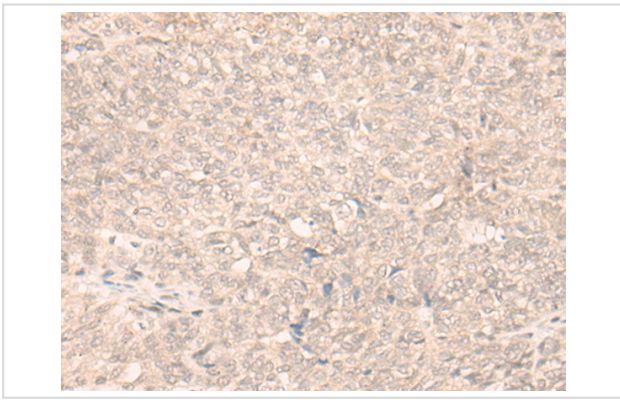
## Application Details

Immunofluorescence:1: 20-100

## Images



The image is immunohistochemistry of paraffin-embedded Human lung cancer tissue using 47122(FAN1 Antibody) at dilution 1/30. (Original magnification: 200)



The image is immunohistochemistry of paraffin-embedded Human ovarian cancer tissue using 47122(FAN1 Antibody) at dilution 1/30. (Original magnification: 200)

## Background

This gene plays a role in DNA interstrand cross-link repair and encodes a protein with 5' flap endonuclease and 5'-3' exonuclease activity. Mutations in this gene cause karyomegalic interstitial nephritis. Alternatively spliced transcript variants encoding distinct isoforms have been described.?

Note: This product is for in vitro research use only