

FSD1 Antibody

Catalog No: #47123

Orders: order@signalwayantibody.comSupport: tech@signalwayantibody.com

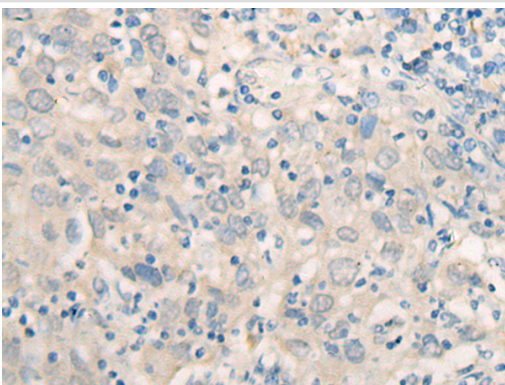
Description

Product Name	FSD1 Antibody
Host Species	Rabbit
Clonality	Polyclonal
Purification	Antigen affinity purification
Applications	WB, IHC
Species Reactivity	Hu
Specificity	The antibody detects endogenous levels of total FSD1 protein.
Immunogen Type	protein
Immunogen Description	Fusion protein of human FSD1
Target Name	FSD1
Other Names	MIR1; GLFND
Accession No.	Swiss-Prot#:Q9BTV5NCBI Gene ID:79187Gene Accssion:BC016442
Uniprot	Q9BTV5
GeneID	79187;
Calculated MW	56 kDa
Concentration	0.7mg/ml
Formulation	Rabbit IgG in pH7.4 PBS, 0.05% NaN ₃ , 40% Glycerol.
Storage	Store at -20C

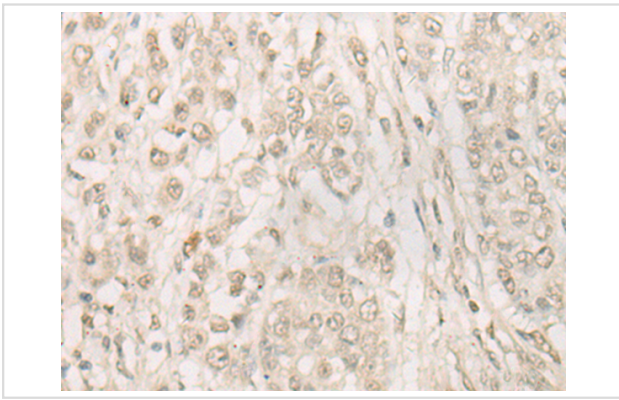
Application Details

Western blotting:1:200-1000Immunofluorescence:1: 20-100

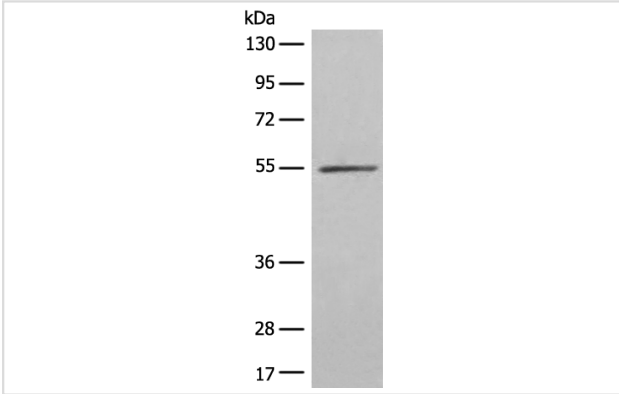
Images



The image is immunohistochemistry of paraffin-embedded Human cervical cancer tissue using 47123(FSD1 Antibody) at dilution 1/20. (Original magnification: ?00)



The image is immunohistochemistry of paraffin-embedded Human colorectal cancer tissue using 47123(FSD1 Antibody) at dilution 1/20. (Original magnification: ?00)



Gel: 8%SDS-PAGE
Lysate: 40 µg, Lane: SP20 cell lysate
Primary antibody:FSD1 Antibody at dilution 1/300
Secondary antibody: Goat anti rabbit IgG at 1/8000 dilution
Exposure time: 20 seconds

Background

This gene encodes a centrosome associated protein that is characterized by an N-terminal coiled-coil region downstream of B-box (BBC) domain, a central fibronectin type III domain, and a C-terminal repeats in spIA and RyR (SPRY) domain. The encoded protein associates with a subset of microtubules and may be involved in the stability and organization of microtubules during cytokinesis.?

Note: This product is for in vitro research use only