

IGSF3 Antibody

Catalog No: #47139

Orders: order@signalwayantibody.comSupport: tech@signalwayantibody.com

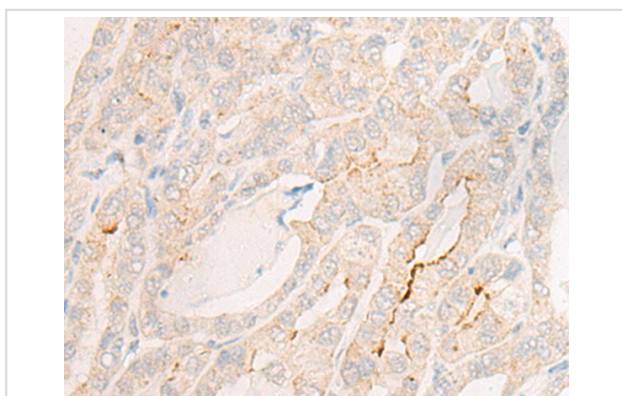
Description

Product Name	IGSF3 Antibody
Host Species	Rabbit
Clonality	Polyclonal
Purification	Antigen affinity purification
Applications	IHC
Species Reactivity	Hu
Specificity	The antibody detects endogenous levels of total IGSF3 protein.
Immunogen Type	peptide
Immunogen Description	Synthetic peptide of human IGSF3
Target Name	IGSF3
Other Names	V8; LCDD; EWI-3
Accession No.	Swiss-Prot#:O75054 NCBI Gene ID:3321Gene Accssion:NP_001007238
Uniprot	O75054
GeneID	3321;
Concentration	1.1mg/ml
Formulation	Rabbit IgG in pH7.4 PBS, 0.05% NaN ₃ , 40% Glycerol.
Storage	Store at -20C

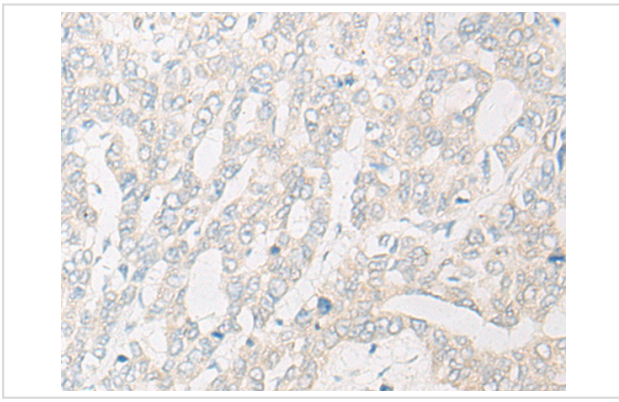
Application Details

Immunofluorescence:1: 20-100

Images



The image is immunohistochemistry of paraffin-embedded Human thyroid cancer tissue using 47139(IGSF3 Antibody) at dilution 1/20. (Original magnification: 200)



The image is immunohistochemistry of paraffin-embedded Human liver cancer tissue using 47139(IGSF3 Antibody) at dilution 1/20. (Original magnification: 200)

Background

The protein encoded by this gene is an immunoglobulin-like membrane protein containing several V-type Ig-like domains. A mutation in this gene has been associated with bilateral nasolacrimal duct obstruction (LCDD).?

Note: This product is for in vitro research use only