

KAT14 Antibody

Catalog No: #47142

Orders: order@signalwayantibody.com

Support: tech@signalwayantibody.com

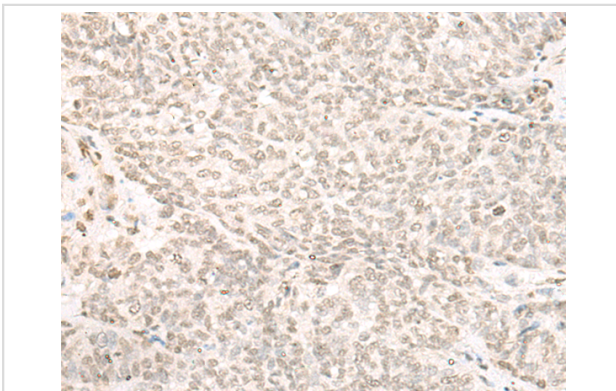
Description

Product Name	KAT14 Antibody
Host Species	Rabbit
Clonality	Polyclonal
Purification	Antigen affinity purification
Applications	IHC
Species Reactivity	Hu
Specificity	The antibody detects endogenous levels of total KAT14 protein.
Immunogen Type	protein
Immunogen Description	Fusion protein of human KAT14
Target Name	KAT14
Other Names	ATAC2; CRP2BP; CSRP2BP; PRO1194; dJ717M23.1
Accession No.	Swiss-Prot#:Q9H8E8NCBI Gene ID:57325Gene Accssion:BC009174
Uniprot	Q9H8E8
GeneID	57325;
Concentration	0.6mg/ml
Formulation	Rabbit IgG in pH7.4 PBS, 0.05% NaN ₃ , 40% Glycerol.
Storage	Store at -20C

Application Details

Immunofluorescence:1: 20-100

Images



The image is immunohistochemistry of paraffin-embedded Human ovarian cancer tissue using 47142(KAT14 Antibody) at dilution 1/20. (Original magnification: ?00)

Background

CSRP2 is a protein containing two LIM domains, which are double zinc finger motifs found in proteins of diverse function. CSRP2 and some related proteins are thought to act as protein adapters, bridging two or more proteins to form a larger protein complex. The protein encoded by this gene binds to one of the LIM domains of CSRP2 and contains an acetyltransferase domain. Although the encoded protein has been detected in the cytoplasm, it is predominantly a nuclear protein. Alternatively spliced transcript variants have been described.

Note: This product is for in vitro research use only