

KLHDC2 Antibody

Catalog No: #47146

Orders: order@signalwayantibody.comSupport: tech@signalwayantibody.com

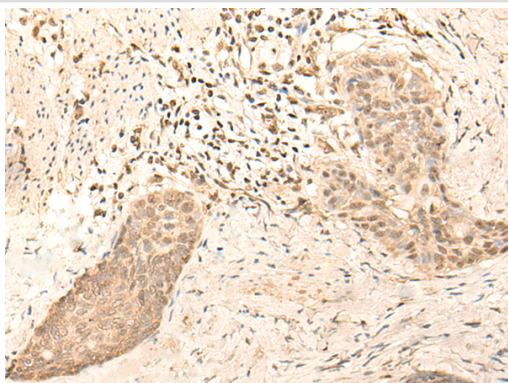
Description

Product Name	KLHDC2 Antibody
Host Species	Rabbit
Clonality	Polyclonal
Purification	Antigen affinity purification
Applications	WB, IHC
Species Reactivity	Hu
Specificity	The antibody detects endogenous levels of total KLHDC2 protein.
Immunogen Type	protein
Immunogen Description	Fusion protein of human KLHDC2
Target Name	KLHDC2
Other Names	LCP; HCLP1; HCLP-1
Accession No.	Swiss-Prot#:Q9Y2U9NCBI Gene ID:23588Gene Accssion:BC002335
Uniprot	Q9Y2U9
GeneID	23588;
Calculated MW	46 kDa
Concentration	0.7mg/ml
Formulation	Rabbit IgG in pH7.4 PBS, 0.05% NaN ₃ , 40% Glycerol.
Storage	Store at -20C

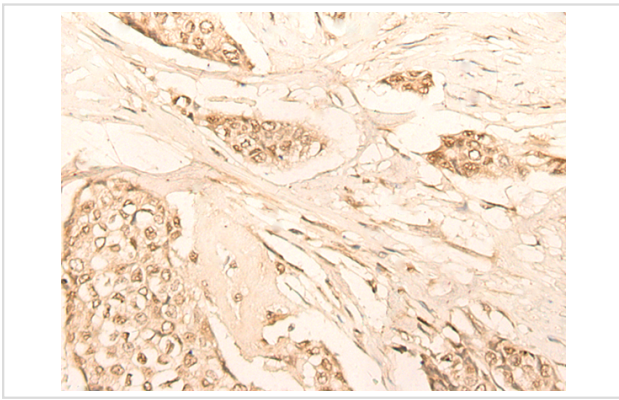
Application Details

Western blotting:1:500-2000Immunofluorescence:1: 20-100

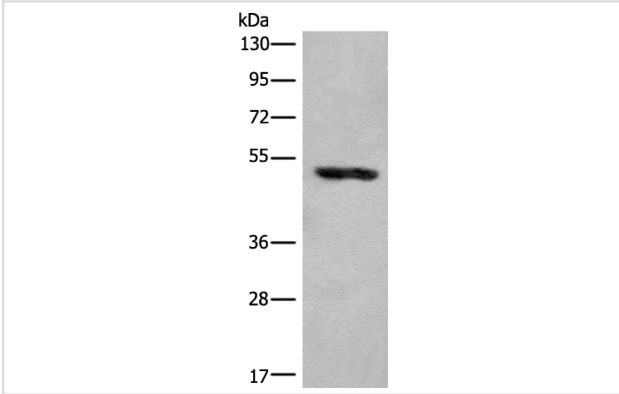
Images



The image is immunohistochemistry of paraffin-embedded Human esophagus cancer tissue using 47146(KLHDC2 Antibody) at dilution 1/20. (Original magnification: ?00)



The image is immunohistochemistry of paraffin-embedded Human breast cancer tissue using 47146(KLHDC2 Antibody) at dilution 1/20. (Original magnification: 200)



Gel: 8%SDS-PAGE
Lysate: 40 µg, Lane: Human placenta tissue lysate
Primary antibody:KLHDC2 Antibody at dilution 1/400
Secondary antibody: Goat anti rabbit IgG at 1/8000 dilution
Exposure time: 3 seconds

Background

Represses CREB3-mediated transcription by interfering with CREB3-DNA binding.

Note: This product is for in vitro research use only