

## PDPN Antibody

Catalog No: #40308

Orders: [order@signalwayantibody.com](mailto:order@signalwayantibody.com)Support: [tech@signalwayantibody.com](mailto:tech@signalwayantibody.com)

## Description

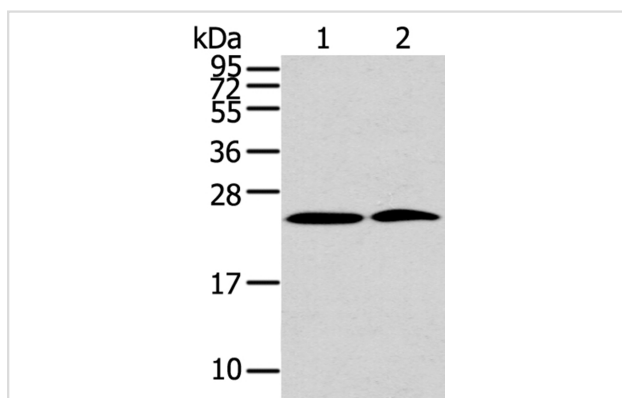
Product Name	PDPN Antibody
Host Species	Rabbit
Clonality	Polyclonal
Purification	Antigen affinity purification.
Applications	WB IHC
Species Reactivity	Hu
Specificity	The antibody detects endogenous levels of total PDPN protein.
Immunogen Type	Peptide
Immunogen Description	Synthetic peptide of human podoplanin
Target Name	PDPN
Other Names	T1A; GP36; GP40; Gp38; OTS8; T1A2; T11A; T1A-2; AGGRUS; HT1A-1; PA2.26
Accession No.	Swiss-Prot:Q86YL7 Gene Accssion:NP_006465
Uniprot	Q86YL7
GeneID	10630;
SDS-PAGE MW	17/25KD
Concentration	1.7mg/ml
Formulation	Rabbit IgG in pH7.4 PBS, 0.05% NaN <sub>3</sub> , 40% Glycerol.
Storage	Store at -20°C

## Application Details

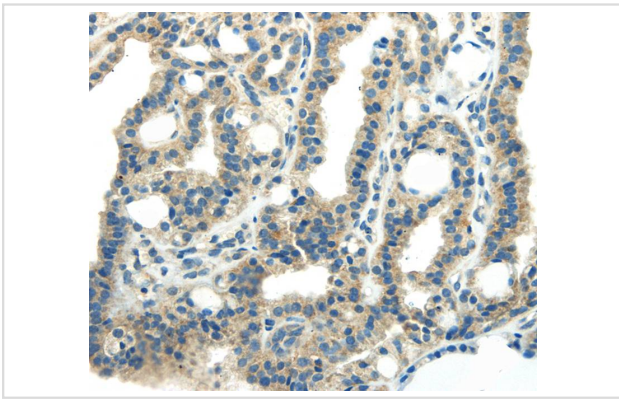
Western blotting: 1:500-1:2000

Immunohistochemistry:1:10-1:50

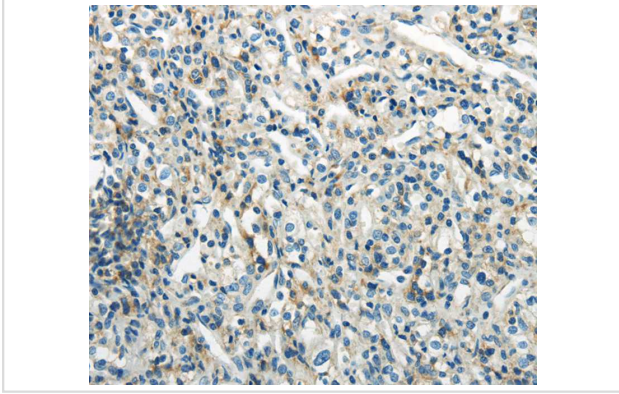
## Images



Gel: 12%SDS-PAGE  
 Lysates (from left to right): 293T and hela cell  
 Amount of lysate: 40ug per lane  
 Primary antibody: 1/200 dilution  
 Secondary antibody dilution: 1/8000  
 Exposure time: 2 minutes



Immunohistochemical analysis of paraffin-embedded Human thyroid cancer tissue using #40308 at dilution 1/25.



Immunohistochemical analysis of paraffin-embedded Human prostate cancer tissue using #40308 at dilution 1/25.

## Background

This gene encodes a type-I integral membrane glycoprotein with diverse distribution in human tissues. The physiological function of this protein may be related to its mucin-type character. The homologous protein in other species has been described as a differentiation antigen and influenza-virus receptor. The specific function of this protein has not been determined but it has been proposed as a marker of lung injury. Alternatively spliced transcript variants encoding different isoforms have been identified.

Note: This product is for in vitro research use only