

KRT9 Antibody

Catalog No: #47147

Orders: order@signalwayantibody.comSupport: tech@signalwayantibody.com

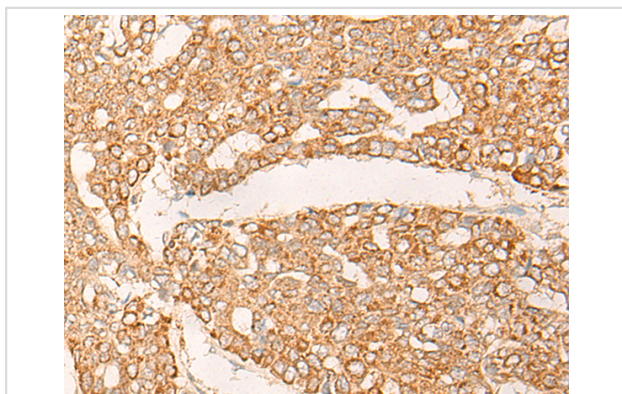
Description

Product Name	KRT9 Antibody
Host Species	Rabbit
Clonality	Polyclonal
Purification	Antigen affinity purification
Applications	IHC
Species Reactivity	Hu
Specificity	The antibody detects endogenous levels of total KRT9 protein.
Immunogen Type	peptide
Immunogen Description	Synthetic peptide of human KRT9
Target Name	KRT9
Other Names	K9; CK-9; EPPK
Accession No.	Swiss-Prot#:P35527 NCBI Gene ID:3857Gene Accssion:NP_000217
Uniprot	P35527
GeneID	3857;
Concentration	0.7mg/ml
Formulation	Rabbit IgG in pH7.4 PBS, 0.05% NaN ₃ , 40% Glycerol.
Storage	Store at -20C

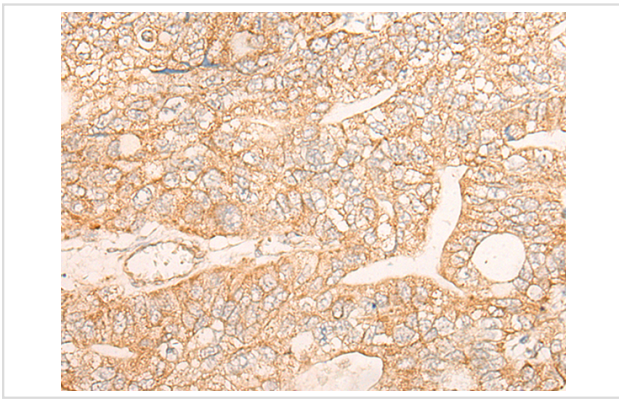
Application Details

Immunofluorescence:1: 20-100

Images



The image is immunohistochemistry of paraffin-embedded Human liver cancer tissue using 47147(KRT9 Antibody) at dilution 1/30. (Original magnification: ?00)



The image is immunohistochemistry of paraffin-embedded Human gastric cancer tissue using 47147(KRT9 Antibody) at dilution 1/30. (Original magnification: 200)

Background

This gene encodes the type I keratin 9, an intermediate filament chain expressed only in the terminally differentiated epidermis of palms and soles. Mutations in this gene cause epidermolytic palmoplantar keratoderma.

Note: This product is for in vitro research use only