

MRI1 Antibody

Catalog No: #47158

Orders: order@signalwayantibody.comSupport: tech@signalwayantibody.com

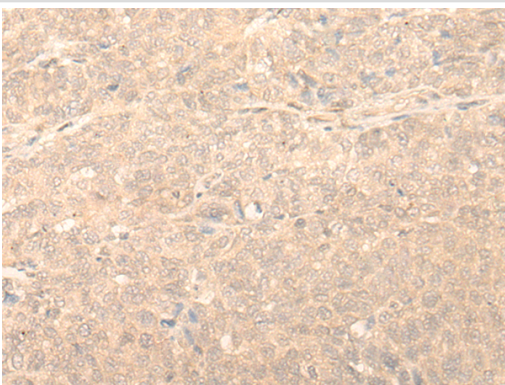
Description

Product Name	MRI1 Antibody
Host Species	Rabbit
Clonality	Polyclonal
Purification	Antigen affinity purification
Applications	WB, IHC
Species Reactivity	Hu
Specificity	The antibody detects endogenous levels of total MRI1 protein.
Immunogen Type	peptide
Immunogen Description	Synthetic peptide of human MRI1
Target Name	MRI1
Other Names	M1Pi; MRDI; MTNA; Ypr118w
Accession No.	Swiss-Prot#:Q9BV20NCBI Gene ID:84245Gene Accssion:NP_001026897
Uniprot	Q9BV20
GeneID	84245;
Calculated MW	40 kDa
Concentration	0.6mg/ml
Formulation	Rabbit IgG in pH7.4 PBS, 0.05% NaN ₃ , 40% Glycerol.
Storage	Store at -20C

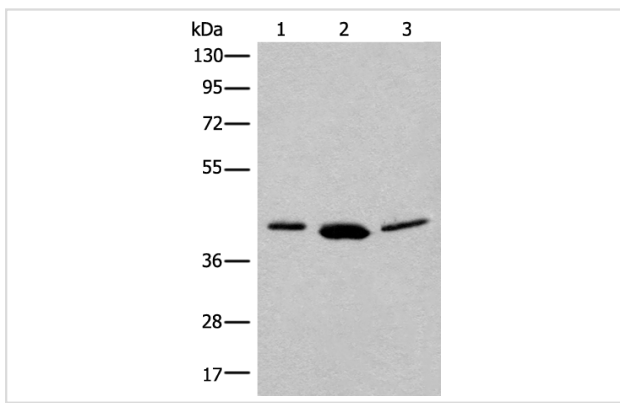
Application Details

Western blotting:1:200-1000Immunofluorescence:1: 20-100

Images



The image is immunohistochemistry of paraffin-embedded Human ovarian cancer tissue using 47158(MRI1 Antibody) at dilution 1/20. (Original magnification: ?00)



Gel: 8%SDS-PAGE

Lysate: 40 µg, Lane 1-3: PC-3 cell, Human bladder transitional cell carcinoma grade 2-3 tissue, 231 cell lysates

Primary antibody: MRI1 Antibody at dilution 1/250

Secondary antibody: Goat anti rabbit IgG at 1/8000 dilution

Exposure time: 1 minute

Background

This enzyme functions in the methionine salvage pathway by catalyzing the interconversion of methylthioribose-1-phosphate and methylthioribulose-1-phosphate. Elevated expression of the encoded protein is associated with metastatic melanoma and this protein promotes melanoma cell invasion independent of its enzymatic activity. Mutations in this gene may be associated with vanishing white matter disease (VMWD).

Note: This product is for in vitro research use only