

MRPL1 Antibody

Catalog No: #47159

Orders: order@signalwayantibody.comSupport: tech@signalwayantibody.com

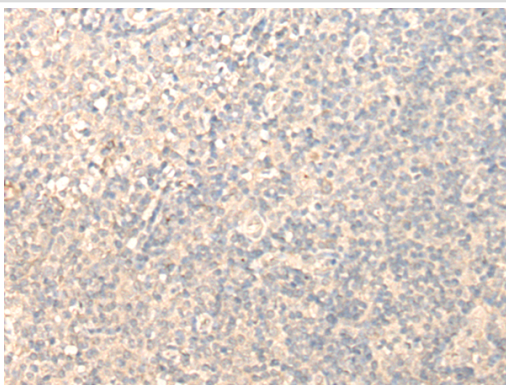
Description

| | |
|-----------------------|---|
| Product Name | MRPL1 Antibody |
| Host Species | Rabbit |
| Clonality | Polyclonal |
| Purification | Antigen affinity purification |
| Applications | WB, IHC |
| Species Reactivity | Hu |
| Specificity | The antibody detects endogenous levels of total MRPL1 protein. |
| Immunogen Type | protein |
| Immunogen Description | Fusion protein of human MRPL1 |
| Target Name | MRPL1 |
| Other Names | L1MT; BM022; MRP-L1 |
| Accession No. | Swiss-Prot#:Q9BYD6NCBI Gene ID:65008Gene Accssion:BC014356 |
| Uniprot | Q9BYD6 |
| GeneID | 65008; |
| Calculated MW | 37 kDa |
| Concentration | 0.8mg/ml |
| Formulation | Rabbit IgG in pH7.4 PBS, 0.05% NaN ₃ , 40% Glycerol. |
| Storage | Store at -20C |

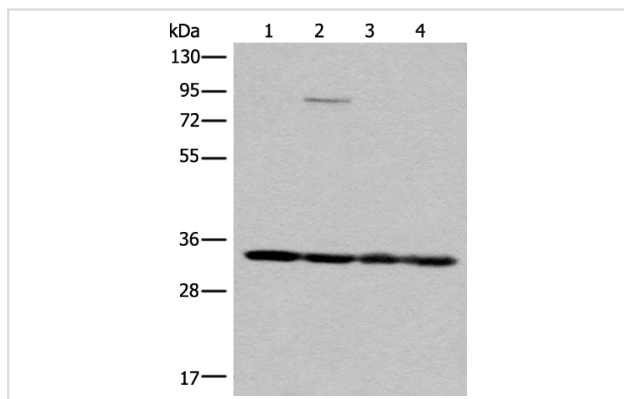
Application Details

Western blotting:1:500-2000Immunofluorescence:1: 20-100

Images



The image is immunohistochemistry of paraffin-embedded Human tonsil tissue using 47159(MRPL1 Antibody) at dilution 1/25. (Original magnification: ?00)



Gel: 8%SDS-PAGE
Lysate: 40 µg, Lane 1-4: K562, HEPG2, 231 and Jurkat cell lysates
Primary antibody:MRPL1 Antibody at dilution 1/350
Secondary antibody: Goat anti rabbit IgG at 1/8000 dilution
Exposure time: 7 seconds

Background

Mammalian mitochondrial ribosomal proteins are encoded by nuclear genes and help in protein synthesis within the mitochondrion. Mitochondrial ribosomes (mitoribosomes) consist of a small 28S subunit and a large 39S subunit. They have an estimated 75% protein to rRNA composition compared to prokaryotic ribosomes, where this ratio is reversed. Another difference between mammalian mitoribosomes and prokaryotic ribosomes is that the latter contain a 5S rRNA. Among different species, the proteins comprising the mitoribosome differ greatly in sequence, and sometimes in biochemical properties, which prevents easy recognition by sequence homology. This gene encodes a 39S subunit protein that belongs to the L1 ribosomal protein family.?

Note: This product is for in vitro research use only