

OLFML3 Antibody

Catalog No: #47173

Orders: order@signalwayantibody.comSupport: tech@signalwayantibody.com

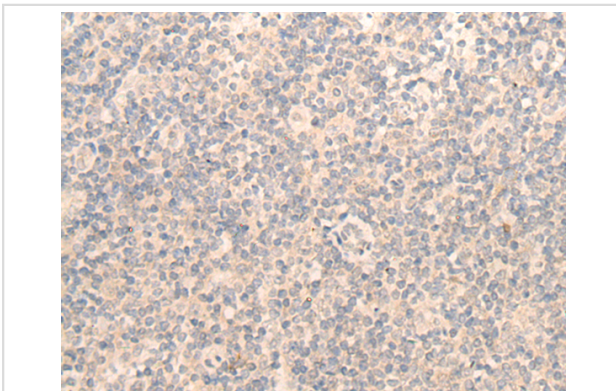
Description

Product Name	OLFML3 Antibody
Host Species	Rabbit
Clonality	Polyclonal
Purification	Antigen affinity purification
Applications	IHC
Species Reactivity	Hu
Specificity	The antibody detects endogenous levels of total OLFML3 protein.
Immunogen Type	protein
Immunogen Description	Fusion protein of human OLFML3
Target Name	OLFML3
Other Names	OLF44; HNOEL-iso
Accession No.	Swiss-Prot#:Q9NRN5NCBI Gene ID:56944Gene Accsson:BC009920
Uniprot	Q9NRN5
GeneID	56944;
Concentration	0.9mg/ml
Formulation	Rabbit IgG in pH7.4 PBS, 0.05% NaN ₃ , 40% Glycerol.
Storage	Store at -20C

Application Details

Immunofluorescence:1: 25-100

Images



The image is immunohistochemistry of paraffin-embedded Human tonsil tissue using 47173(OLFML3 Antibody) at dilution 1/25. (Original magnification: 200)

Background

Secreted scaffold protein that plays an essential role in dorsoventral patterning during early development. Stabilizes axial formation by restricting chordin (CHRD) activity on the dorsal side. Acts by facilitating the association between the tolloid proteases and their substrate chordin (CHRD), leading to enhance chordin (CHRD) degradation (By similarity). May have matrix-related function involved in placental and embryonic development, or play a similar role in other physiological processes.

Note: This product is for in vitro research use only