

OTUD6A Antibody

Catalog No: #47174

Orders: order@signalwayantibody.com

Support: tech@signalwayantibody.com

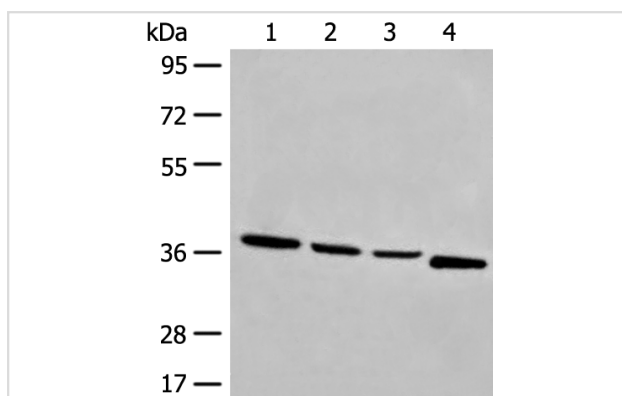
Description

Product Name	OTUD6A Antibody
Host Species	Rabbit
Clonality	Polyclonal
Purification	Antigen affinity purification
Applications	WB
Species Reactivity	Hu
Specificity	The antibody detects endogenous levels of total OTUD6A protein.
Immunogen Type	peptide
Immunogen Description	Synthetic peptide of human OTUD6A
Target Name	OTUD6A
Other Names	DUBA2; HSHIN6
Accession No.	Swiss-Prot#:Q7L8S5NCBI Gene ID:139562Gene Accssion:NP_997203
Uniprot	Q7L8S5
GeneID	139562;
Calculated MW	33 kDa
Concentration	1.4mg/ml
Formulation	Rabbit IgG in pH7.4 PBS, 0.05% NaN ₃ , 40% Glycerol.
Storage	Store at -20C

Application Details

Western blotting:1:500-2000

Images



Gel: 8%SDS-PAGE

Lysate: 40 µg, Lane 1-4: Human breast cancer tissue, TM4, 231 and Jurkat cell lysates

Primary antibody:OTUD6A Antibody at dilution 1/550

Secondary antibody: Goat anti rabbit IgG at 1/8000 dilution

Exposure time: 20 seconds

Background

Deubiquitinating enzymes (DUBs; see MIM 603478) are proteases that specifically cleave ubiquitin (MIM 191339) linkages, negating the action of ubiquitin ligases. DUBA2 belongs to a DUB subfamily characterized by an ovarian tumor (OTU) domain.

Note: This product is for in vitro research use only