

PITPNB Antibody

Catalog No: #47176

Orders: order@signalwayantibody.comSupport: tech@signalwayantibody.com

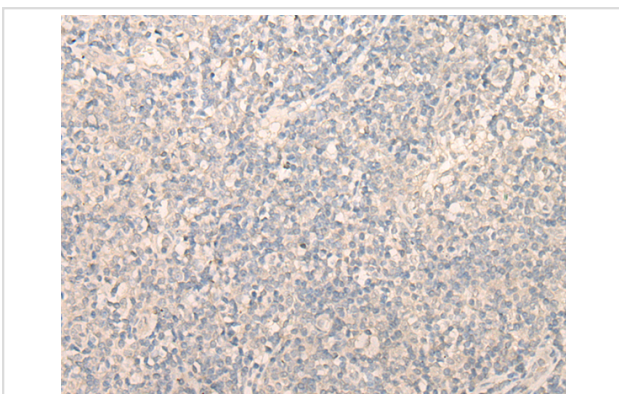
Description

Product Name	PITPNB Antibody
Host Species	Rabbit
Clonality	Polyclonal
Purification	Antigen affinity purification
Applications	WB, IHC
Species Reactivity	Hu
Specificity	The antibody detects endogenous levels of total PITPNB protein.
Immunogen Type	protein
Immunogen Description	Fusion protein of human PITPNB
Target Name	PITPNB
Other Names	VIB1B; PtdInsTP; PI-TP-beta
Accession No.	Swiss-Prot#:P48739NCBI Gene ID:23760Gene Accssion:BC018704
Uniprot	P48739
GeneID	23760;
Calculated MW	32 kDa
Concentration	0.9mg/ml
Formulation	Rabbit IgG in pH7.4 PBS, 0.05% NaN ₃ , 40% Glycerol.
Storage	Store at -20C

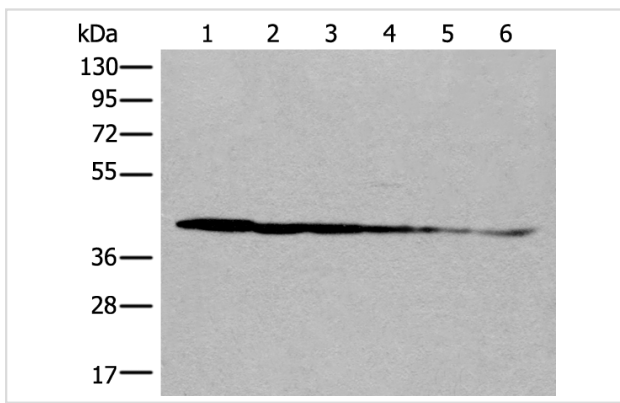
Application Details

Western blotting:1:500-2000Immunofluorescence:1: 20-100

Images



The image is immunohistochemistry of paraffin-embedded Human tonsil tissue using 47176(PITPNB Antibody) at dilution 1/25. (Original magnification: ?00)



Gel: 8%SDS-PAGE

Lysate: 40 µg, Lane 1-6: Rat brain tissue, Human cerebrum tissue, Human fetal brain tissue, Hela cell, Human breast cancer tissue, Jurkat cell lysates

Primary antibody: PITPNB Antibody at dilution 1/500

Secondary antibody: Goat anti rabbit IgG at 1/8000 dilution

Exposure time: 20 seconds

Background

This gene encodes a cytoplasmic protein that catalyzes the transfer of phosphatidylinositol and phosphatidylcholine between membranes. This transfer activity is required for COPI complex-mediated retrograde transport from the Golgi apparatus to the endoplasmic reticulum. Alternative splicing of this gene results in multiple transcript variants.

Note: This product is for in vitro research use only