

## PLEKHA1 Antibody

Catalog No: #47177

Orders: [order@signalwayantibody.com](mailto:order@signalwayantibody.com)Support: [tech@signalwayantibody.com](mailto:tech@signalwayantibody.com)

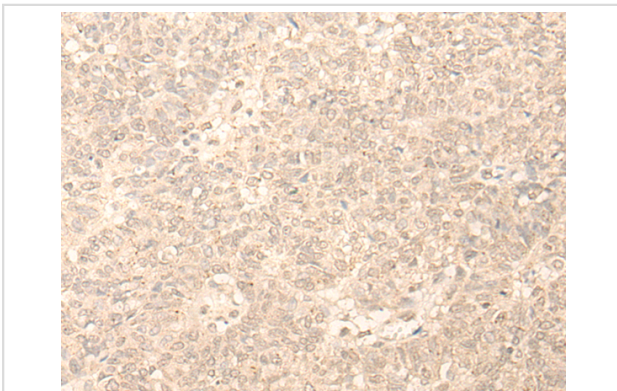
## Description

Product Name	PLEKHA1 Antibody
Host Species	Rabbit
Clonality	Polyclonal
Purification	Antigen affinity purification
Applications	IHC
Species Reactivity	Hu
Specificity	The antibody detects endogenous levels of total PLEKHA1 protein.
Immunogen Type	protein
Immunogen Description	Fusion protein of human PLEKHA1
Target Name	PLEKHA1
Other Names	TAPP1
Accession No.	Swiss-Prot#:Q9HB21NCBI Gene ID:59338Gene Accssion:BC001136
Uniprot	Q9HB21
GeneID	59338;
Concentration	1.1mg/ml
Formulation	Rabbit IgG in pH7.4 PBS, 0.05% NaN <sub>3</sub> , 40% Glycerol.
Storage	Store at -20C

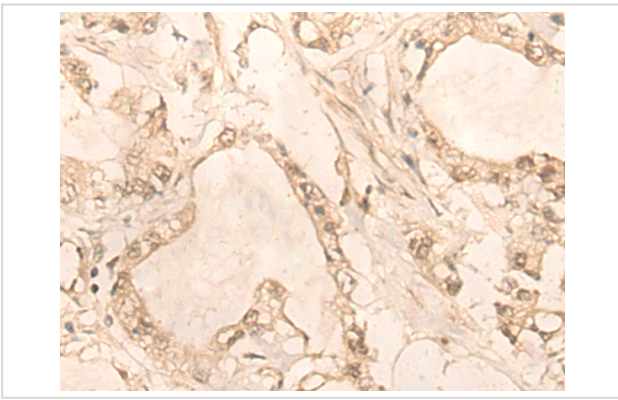
## Application Details

Immunofluorescence:1: 20-100

## Images



The image is immunohistochemistry of paraffin-embedded Human ovarian cancer tissue using 47177(PLEKHA1 Antibody) at dilution 1/30. (Original magnification: ?00)



The image is immunohistochemistry of paraffin-embedded Human gastric cancer tissue using 47177(PLEKHA1 Antibody) at dilution 1/30. (Original magnification: ?00)

## Background

This gene encodes a pleckstrin homology domain-containing adapter protein. The encoded protein is localized to the plasma membrane where it specifically binds phosphatidylinositol 3,4-bisphosphate. This protein may be involved in the formation of signaling complexes in the plasma membrane. Polymorphisms in this gene are associated with age-related macular degeneration. Alternate splicing results in multiple transcript variants. A pseudogene of this gene is found on chromosome 5.

Note: This product is for in vitro research use only