

POLG Antibody

Catalog No: #47178

Orders: order@signalwayantibody.comSupport: tech@signalwayantibody.com

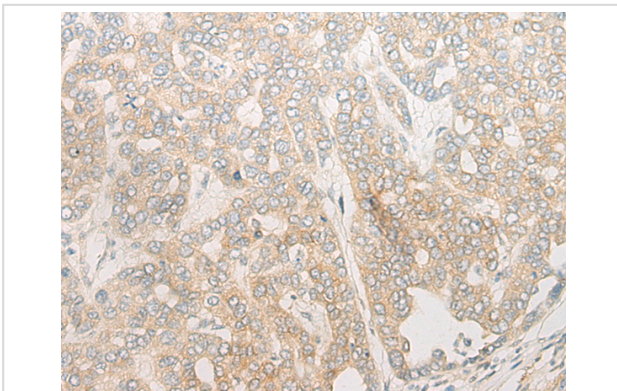
Description

Product Name	POLG Antibody
Host Species	Rabbit
Clonality	Polyclonal
Purification	Antigen affinity purification
Applications	IHC
Species Reactivity	Hu
Specificity	The antibody detects endogenous levels of total POLG protein.
Immunogen Type	peptide
Immunogen Description	Synthetic peptide of human POLG
Target Name	POLG
Other Names	PEO; MDP1; SCAE; MIRAS; POLG1; POLGA; SANDO; MTDPS4A; MTDPS4B
Accession No.	Swiss-Prot#:P54098 NCBI Gene ID:5428Gene Accssion:NP_002684
Uniprot	P54098
GeneID	5428;
Concentration	0.6mg/ml
Formulation	Rabbit IgG in pH7.4 PBS, 0.05% NaN ₃ , 40% Glycerol.
Storage	Store at -20C

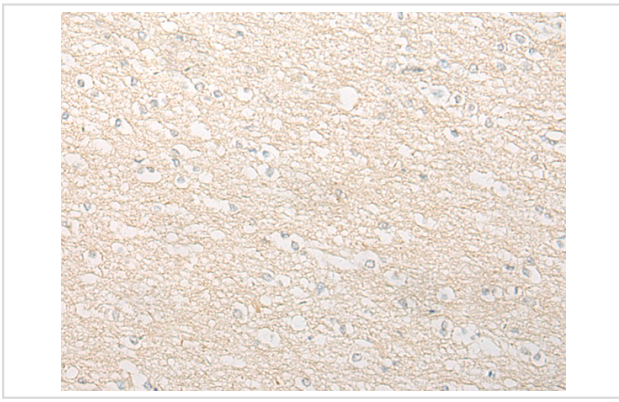
Application Details

Immunofluorescence:1: 20-100

Images



The image is immunohistochemistry of paraffin-embedded Human liver cancer tissue using 47178(POLG Antibody) at dilution 1/20. (Original magnification: ?00)



The image is immunohistochemistry of paraffin-embedded Human brain tissue using 47178(POLG Antibody) at dilution 1/20. (Original magnification: ?00)

Background

Mitochondrial DNA polymerase is heterotrimeric, consisting of a homodimer of accessory subunits plus a catalytic subunit. The protein encoded by this gene is the catalytic subunit of mitochondrial DNA polymerase. The encoded protein contains a polyglutamine tract near its N-terminus that may be polymorphic. Defects in this gene are a cause of progressive external ophthalmoplegia with mitochondrial DNA deletions 1 (PEOA1), sensory ataxic neuropathy dysarthria and ophthalmoparesis (SANDO), Alpers-Huttenlocher syndrome (AHS), and mitochondrial neurogastrointestinal encephalopathy syndrome (MNGIE). Two transcript variants encoding the same protein have been found for this gene.?

Note: This product is for in vitro research use only