

PSEN1 Antibody

Catalog No: #47180

Orders: order@signalwayantibody.comSupport: tech@signalwayantibody.com

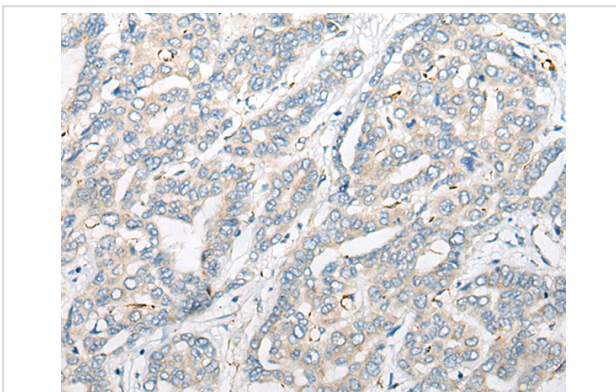
Description

Product Name	PSEN1 Antibody
Host Species	Rabbit
Clonality	Polyclonal
Purification	Antigen affinity purification
Applications	WB, IHC
Species Reactivity	Hu
Specificity	The antibody detects endogenous levels of total PSEN1 protein.
Immunogen Type	peptide
Immunogen Description	Synthetic peptide of human PSEN1
Target Name	PSEN1
Other Names	AD3; FAD; PS1; PS-1; S182
Accession No.	Swiss-Prot#:P49768NCBI Gene ID:5663Gene Accssion:NP_000012
Uniprot	P49768
GeneID	5663;
Calculated MW	53 kDa
Concentration	0.6mg/ml
Formulation	Rabbit IgG in pH7.4 PBS, 0.05% NaN ₃ , 40% Glycerol.
Storage	Store at -20C

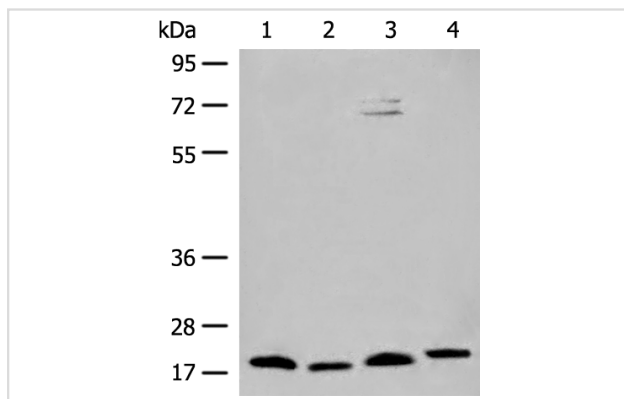
Application Details

Western blotting:1:200-1000Immunofluorescence:1: 20-100

Images



The image is immunohistochemistry of paraffin-embedded Human liver cancer tissue using 47180(PSEN1 Antibody) at dilution 1/20. (Original magnification: ?00)



Gel: 8%SDS-PAGE

Lysate: 40 µg, Lane 1-4: Human kidney tissue, RAW264.7 cell, Mouse kidney tissue, Mouse liver tissue lysates

Primary antibody:PSEN1 Antibody at dilution 1/300

Secondary antibody: Goat anti rabbit IgG at 1/8000 dilution

Exposure time: 2 minutes

Background

Alzheimer's disease (AD) patients with an inherited form of the disease carry mutations in the presenilin proteins (PSEN1; PSEN2) or in the amyloid precursor protein (APP). These disease-linked mutations result in increased production of the longer form of amyloid-beta (main component of amyloid deposits found in AD brains). Presenilins are postulated to regulate APP processing through their effects on gamma-secretase, an enzyme that cleaves APP. Also, it is thought that the presenilins are involved in the cleavage of the Notch receptor, such that they either directly regulate gamma-secretase activity or themselves are protease enzymes. Several alternatively spliced transcript variants encoding different isoforms have been identified for this gene, the full-length nature of only some have been determined.

Note: This product is for in vitro research use only