

RBM11 Antibody

Catalog No: #47186

Orders: order@signalwayantibody.comSupport: tech@signalwayantibody.com

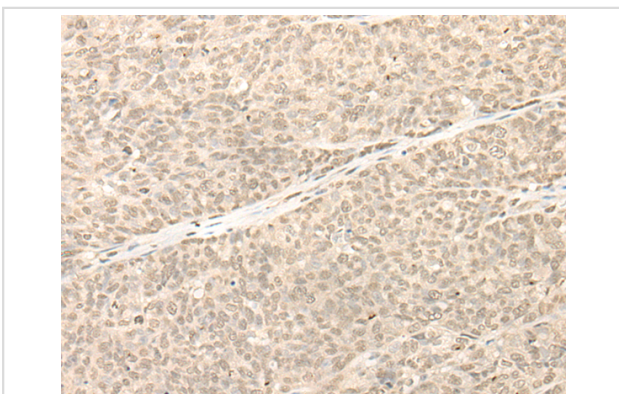
Description

Product Name	RBM11 Antibody
Host Species	Rabbit
Clonality	Polyclonal
Purification	Antigen affinity purification
Applications	WB, IHC
Species Reactivity	Hu
Specificity	The antibody detects endogenous levels of total RBM11 protein.
Immunogen Type	protein
Immunogen Description	Fusion protein of human RBM11
Target Name	RBM11
Accession No.	Swiss-Prot#:P57052NCBI Gene ID:54033Gene Accssion:BC030196
Uniprot	P57052
GeneID	54033;
Calculated MW	32 kDa
Concentration	0.6mg/ml
Formulation	Rabbit IgG in pH7.4 PBS, 0.05% NaN ₃ , 40% Glycerol.
Storage	Store at -20C

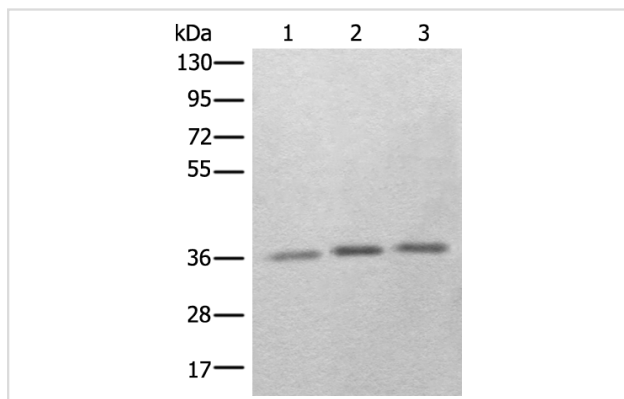
Application Details

Western blotting:1:200-1000Immunofluorescence:1: 25-100

Images



The image is immunohistochemistry of paraffin-embedded Human ovarian cancer tissue using 47186(RBM11 Antibody) at dilution 1/20. (Original magnification: ?00)



Gel: 8%SDS-PAGE

Lysate: 40 µg, Lane 1-3: Human kidney tissue, Human cerebella tissue and Human fetal brain tissue lysates

Primary antibody:RBM11 Antibody at dilution 1/250

Secondary antibody: Goat anti rabbit IgG at 1/8000 dilution

Exposure time: 3 minutes

Background

Tissue-specific splicing factor with potential implication in the regulation of alternative splicing during neuron and germ cell differentiation. Antagonizes SRSF1-mediated BCL-X splicing. May affect the choice of alternative 5' splice sites by binding to specific sequences in exons and antagonizing the SR protein SRSF1.

Note: This product is for in vitro research use only