

SAMM50 Antibody

Catalog No: #47197

Orders: order@signalwayantibody.comSupport: tech@signalwayantibody.com

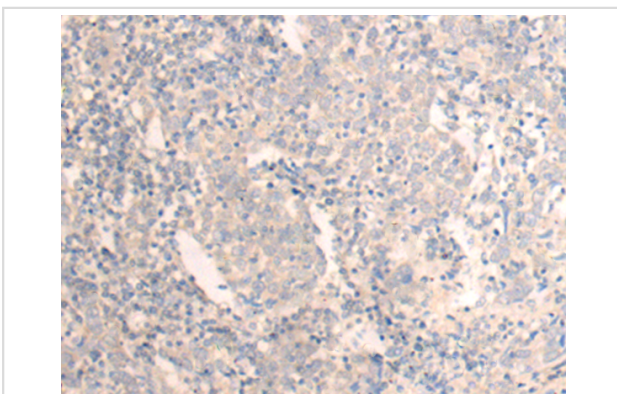
Description

Product Name	SAMM50 Antibody
Host Species	Rabbit
Clonality	Polyclonal
Purification	Antigen affinity purification
Applications	IHC
Species Reactivity	Hu
Specificity	The antibody detects endogenous levels of total SAMM50 protein.
Immunogen Type	protein
Immunogen Description	Fusion protein of human SAMM50
Target Name	SAMM50
Other Names	OMP85; SAM50; TOB55; TRG-3; CGI-51; YNL026W
Accession No.	Swiss-Prot#:Q9Y512NCBI Gene ID:25813Gene Accssion:BC011681
Uniprot	Q9Y512
GeneID	25813;
Concentration	0.5mg/ml
Formulation	Rabbit IgG in pH7.4 PBS, 0.05% NaN ₃ , 40% Glycerol.
Storage	Store at -20C

Application Details

Immunofluorescence:1: 25-100

Images



The image is immunohistochemistry of paraffin-embedded Human cervical cancer tissue using 47197(SAMM50 Antibody) at dilution 1/20. (Original magnification: ?00)

Background

This gene encodes a component of the Sorting and Assembly Machinery (SAM) of the mitochondrial outer membrane. The Sam complex functions in the assembly of beta-barrel proteins into the outer mitochondrial membrane.

Note: This product is for in vitro research use only