

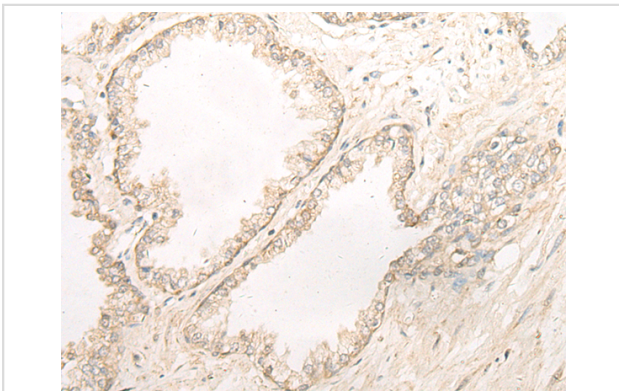
Description

Product Name	SGCA Antibody
Host Species	Rabbit
Clonality	Polyclonal
Purification	Antigen affinity purification
Applications	IHC
Species Reactivity	Hu
Specificity	The antibody detects endogenous levels of total SGCA protein.
Immunogen Type	protein
Immunogen Description	Fusion protein of human SGCA
Target Name	SGCA
Other Names	ADL; DAG2; 50DAG; DMDA2; LGMD2D; SCARMD1; adhalin
Accession No.	Swiss-Prot#:Q16586NCBI Gene ID:6442Gene Accssion:BC025702
Uniprot	Q16586
GeneID	6442;
Concentration	1mg/ml
Formulation	Rabbit IgG in pH7.4 PBS, 0.05% NaN ₃ , 40% Glycerol.
Storage	Store at -20C

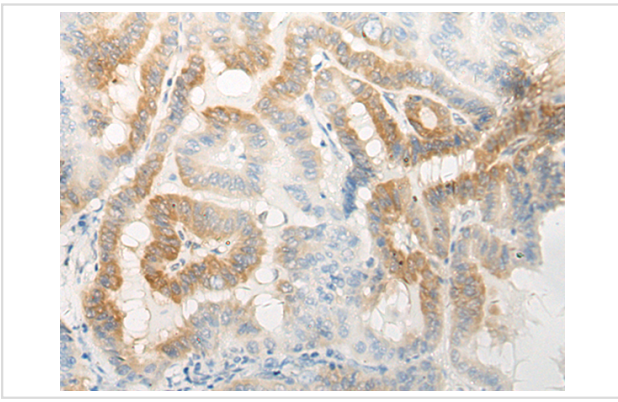
Application Details

Immunofluorescence:1: 20-100

Images



The image is immunohistochemistry of paraffin-embedded Human prostate cancer tissue using 47200(SGCA Antibody) at dilution 1/30. (Original magnification: ?00)



The image is immunohistochemistry of paraffin-embedded Human thyroid cancer tissue using 47200(SGCA Antibody) at dilution 1/30. (Original magnification: 200)

Background

This gene encodes a component of the dystrophin-glycoprotein complex (DGC), which is critical to the stability of muscle fiber membranes and to the linking of the actin cytoskeleton to the extracellular matrix. Its expression is thought to be restricted to striated muscle. Mutations in this gene result in type 2D autosomal recessive limb-girdle muscular dystrophy. Multiple transcript variants encoding different isoforms have been found for this gene.

Note: This product is for in vitro research use only