

SLC29A2 Antibody

Catalog No: #47206

Orders: order@signalwayantibody.comSupport: tech@signalwayantibody.com

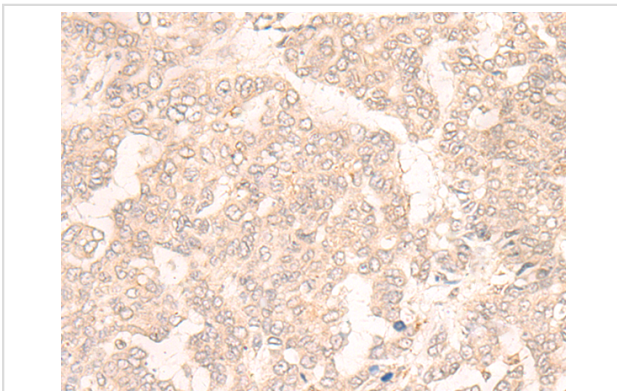
Description

| | |
|-----------------------|--|
| Product Name | SLC29A2 Antibody |
| Host Species | Rabbit |
| Clonality | Polyclonal |
| Purification | Antigen affinity purification |
| Applications | IHC |
| Species Reactivity | Hu |
| Specificity | The antibody detects endogenous levels of total SLC29A2 protein. |
| Immunogen Type | peptide |
| Immunogen Description | Synthetic peptide of human SLC29A2 |
| Target Name | SLC29A2 |
| Other Names | ENT2; DER12; HNP36 |
| Accession No. | Swiss-Prot#:Q14542 NCBI Gene ID:3177Gene Accssion:NP_001523 |
| Uniprot | Q14542 |
| GeneID | 3177; |
| Concentration | 0.4mg/ml |
| Formulation | Rabbit IgG in pH7.4 PBS, 0.05% NaN ₃ , 40% Glycerol. |
| Storage | Store at -20C |

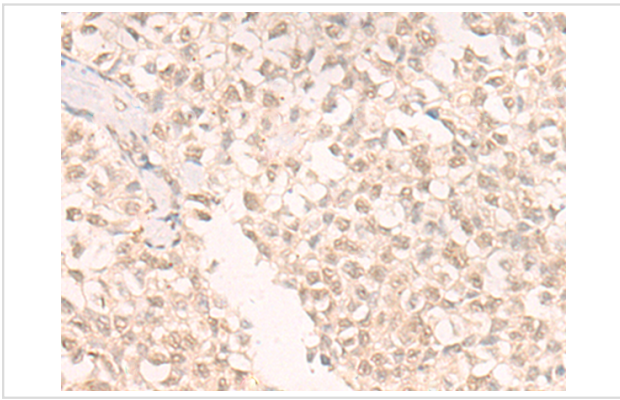
Application Details

Immunofluorescence:1: 20-100

Images



The image is immunohistochemistry of paraffin-embedded Human liver cancer tissue using 47206(SLC29A2 Antibody) at dilution 1/20. (Original magnification: ?00)



The image is immunohistochemistry of paraffin-embedded Human ovarian cancer tissue using 47206(SLC29A2 Antibody) at dilution 1/20. (Original magnification: ?00)

Background

The uptake of nucleosides by transporters, such as SLC29A2, is essential for nucleotide synthesis by salvage pathways in cells that lack de novo biosynthetic pathways. Nucleoside transport also plays a key role in the regulation of many physiologic processes through its effect on adenosine concentration at the cell surface (Griffiths et al., 1997 [PubMed 9396714]).

Note: This product is for in vitro research use only