

MEP1A Antibody

Catalog No: #40314

Orders: order@signalwayantibody.com

Support: tech@signalwayantibody.com

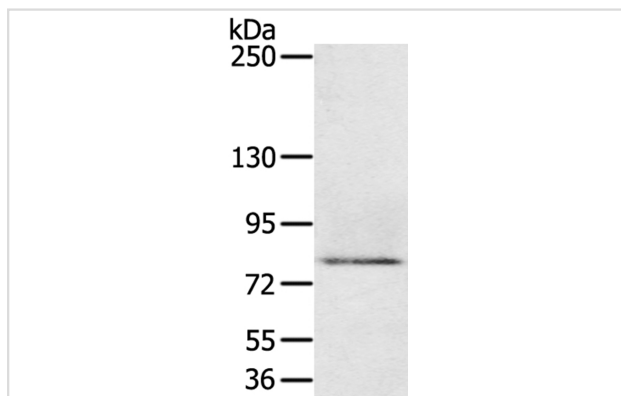
Description

Product Name	MEP1A Antibody
Host Species	Rabbit
Clonality	Polyclonal
Purification	Antigen affinity purification.
Applications	WB
Species Reactivity	Hu
Specificity	The antibody detects endogenous levels of total MEP1A protein.
Immunogen Type	Protein
Immunogen Description	Fusion protein corresponding to a region derived from internal residues of human meprin A, alpha (PABA peptide hydrolase)
Target Name	MEP1A
Other Names	PPHA
Accession No.	Swiss-Prot:Q16819Gene Accssion:BC131714
Uniprot	Q16819
GeneID	4224;
SDS-PAGE MW	84KD
Concentration	1.3mg/ml
Formulation	Rabbit IgG in pH7.4 PBS, 0.05% NaN ₃ , 40% Glycerol.
Storage	Store at -20°C

Application Details

Western blotting: 1:200-1:1000

Images



Gel: 6%SDS-PAGE
 Lysate: 40ug Human rectum carcinoma tissuePrimary
 antibody: 1/200 dilution
 Secondary antibody dilution: 1/8000
 Exposure time: 3 minutes

Background

Meprin A subunit alpha?also known as?endopeptidase-2?or?PABA peptide hydrolase?is the alpha subunit of the?meprin A?enzyme?that in humans

is encoded by the MEP1A gene.^{[1][2]} The MEP1A locus is on chromosome 6p in humans and on chromosome 17 in mice. The meprin alpha subunit product of the MEP1A gene is processed in the endoplasmic reticulum during intracellular transport, and is secreted as homomeric meprin A.

Note: This product is for in vitro research use only