

SLC39A4 Antibody

Catalog No: #47208

Orders: order@signalwayantibody.comSupport: tech@signalwayantibody.com

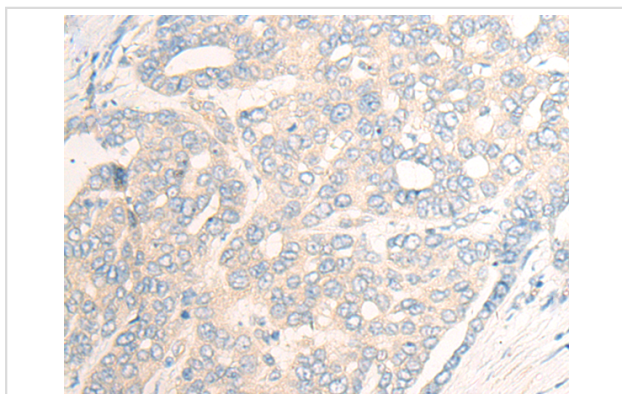
Description

Product Name	SLC39A4 Antibody
Host Species	Rabbit
Clonality	Polyclonal
Purification	Antigen affinity purification
Applications	IHC
Species Reactivity	Hu
Specificity	The antibody detects endogenous levels of total SLC39A4 protein.
Immunogen Type	peptide
Immunogen Description	Synthetic peptide of human SLC39A4
Target Name	SLC39A4
Other Names	AEZ; ZIP4; AWMS2
Accession No.	Swiss-Prot#:Q6P5W5 NCBI Gene ID:55630Gene Accssion:NP_570901
Uniprot	Q6P5W5
GeneID	55630;
Concentration	0.9mg/ml
Formulation	Rabbit IgG in pH7.4 PBS, 0.05% NaN ₃ , 40% Glycerol.
Storage	Store at -20C

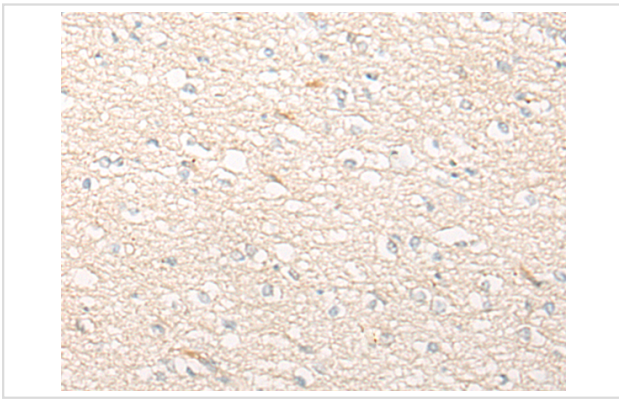
Application Details

Immunofluorescence:1: 20-100

Images



The image is immunohistochemistry of paraffin-embedded Human liver cancer tissue using 47208(SLC39A4 Antibody) at dilution 1/20. (Original magnification: ?00)



The image is immunohistochemistry of paraffin-embedded Human brain tissue using 47208(SLC39A4 Antibody) at dilution 1/20. (Original magnification: 200)

Background

This gene encodes a member of the zinc/iron-regulated transporter-like protein (ZIP) family. The encoded protein localizes to cell membranes and is required for zinc uptake in the intestine. Mutations in this gene result in acrodermatitis enteropathica. Multiple transcript variants encoding different isoforms have been found for this gene.

Note: This product is for in vitro research use only